

BELL PUSH (With luminous name plate & diffuser)

Instruction Sheet

Technical Characteristics

Scope

These devices are designed to switch on bells, buzzers or similar loads momentarily. They spring back to the OFF position immediately when you remove pressure. A high-efficiency LED illuminates an in-built label any text or symbol that is written on this label thus becomes visible and readable even in dark conditions.

Technical Specifications

- Rated Voltage 240V~
- Rated current 10AX.
- Clearance between contacts > 3 mm.
- Insulation resistance (dry) tested with 500 Vdc > 100 Mega ohms.
- Electric strength 2000 V AC across break.
- Electric life > 50,000 switch operations.
- Switch operations with rated current and rated voltage. of power factor 0.6 (lag).
- Complies flame retardability at 850° C. ▽
- Smooth rocker actions.
- Silver cadmium oxide contacts for low contact resistance to enhance operating life.
- Sleek design and soft contours.
- Protection IP20.
- Size: 2 Modules.

102015



Fig. 1

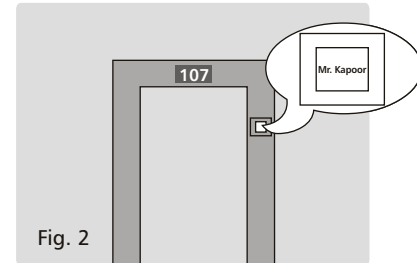
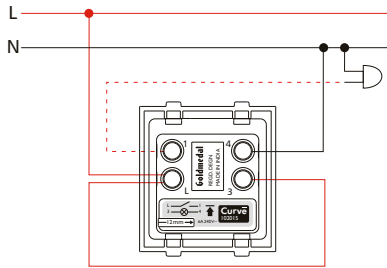


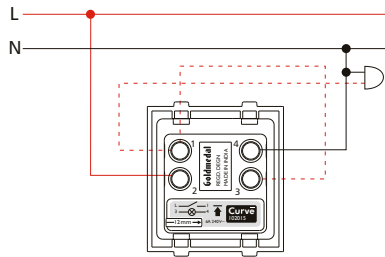
Fig. 2

Wiring Diagram



For switch location in the dark:
LED remains lit always.

(Without feedback feature)



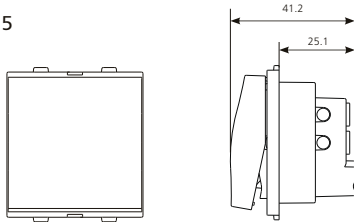
For switch location in lighted corridor:
The LED will light only when the
push button is pressed.

(With feedback feature)

Dimensions (mm)

Elevation and side view show the overall dimensions and the flush depth

102015



Opening of the name-plate knob

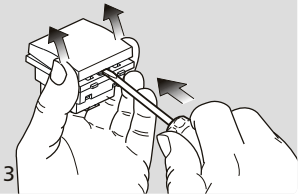


Fig. 3

Assembling exploded view

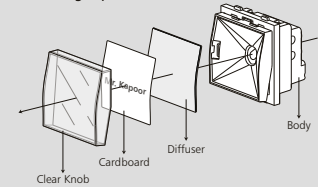


Fig. 4

GOLDMEDAL ELECTRICALS PVT. LTD.

Bldg. No. 2, Shripal Industrial Estate, Valliv Road, Vasai East, Thane - 401208, Maharashtra, India.

For more details, email us at info@goldmedalindia.com www.goldmedalindia.com

© Copyright 2003 by Goldmedal

Unless otherwise specified, the products illustrated in this Leaflet have been designed by Goldmedal and are covered by one or more international patents.

Customer Care Toll Free No.
1800 209 0234

