

# HOSPITALITY

## Technical Characteristics

### Six Way Bell Indicator (6M) For call display & acknowledgement combined with buzzer

This unit helps you to attract the attention of staff in hospitals, clinics, hotels, residential premises, etc. For example, a patient in a hospital can draw the attention of a nurse by pressing the bell push button in their room. This activates an inbuilt buzzer along with the lighting of an associated LED on the bell indicator unit (106567) in the nurse station. The Six Way Bell Indicator assembly is a composite unit with inbuilt buzzer and can cater to six different actuating locations.

#### Functions

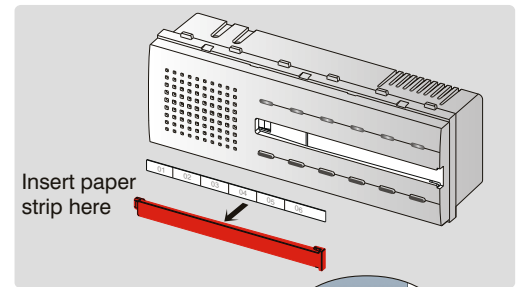
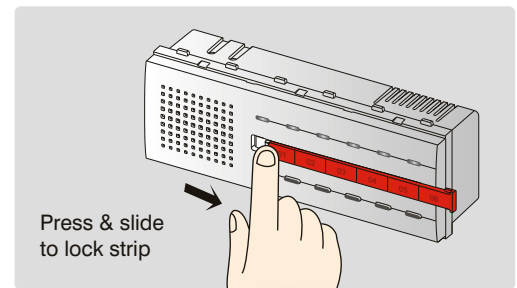
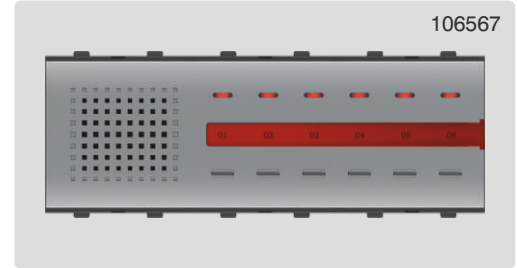
- Managing call communication: Between six to one
- Residential house : Between owners and attendants.
  - Hospital : Between patients and nursing station.
  - Hotel : Between hotel guests and attendants at the reception counter, housekeeping, etc.
  - Office : Between officers and their peons, subordinates.

#### Technical Specifications

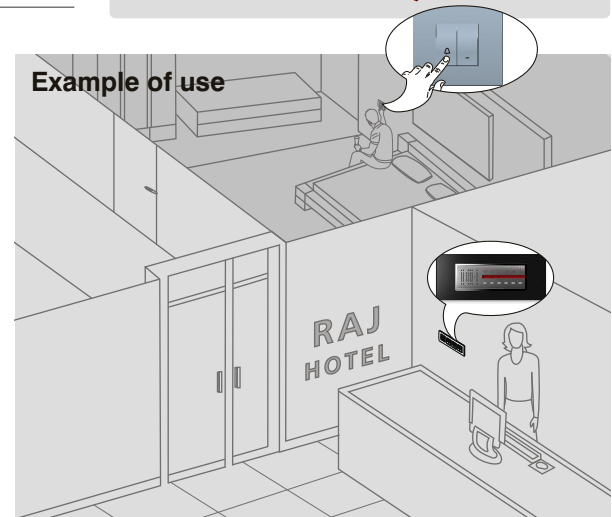
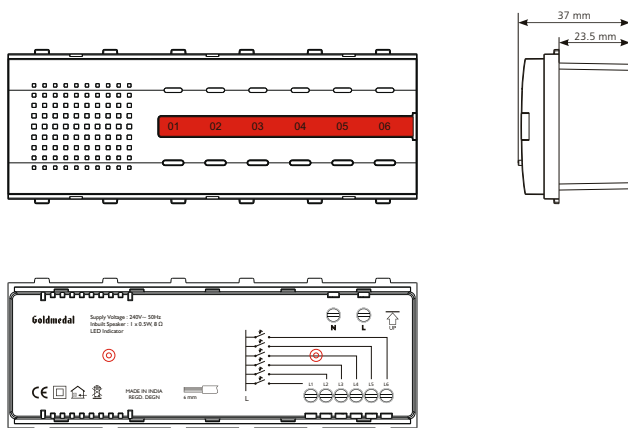
- Rated Voltage 240V~ 50-60 Hz
- Speaker 0.25 Watt, 8 ohms

#### Features

- Unit is a composite assembly of 6 Way Bell Indicator and a buzzer.
- Provided with card for text/symbol as a labeling field for immediate identification of particular location.
- Recommended to have with attendants in hotels, offices etc.
- High-efficiency LED.
- Connectors for easy wiring



#### Dimensions (mm) Side view shows overall dimensions & flush depth.



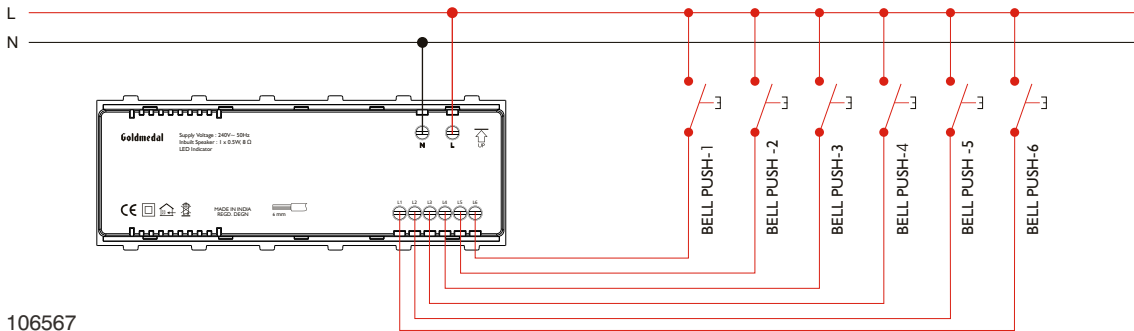
#### **⚠ Safety instruction**

- Electrical equipment must be installed and fitted by a qualified electrician only.
- The electronic switches are single pole switches and disconnect only one pole when they are OFF.
- Before working on the appliance, to prevent electric shock, disconnect both the poles of the main supply.
- Failure to observe any of the installation instructions may result in fire and other safety hazards.

#### **Warranty**

All electronic devices are warranted against manufacturing defects for two years from the date of purchase. In the event of defects, Goldmedal will repair or, at its discretion, replace the warranted product if delivered to a Goldmedal authorized dealer along with a duly stamped guarantee card or sales receipt that shows the date of purchase along with the serial no. of the product. This warranty excludes defects due to abnormal load, abuse or failure to use the product in accordance with the instructions. Goldmedal shall not be liable for any other damages, whether incidental, consequential or otherwise.

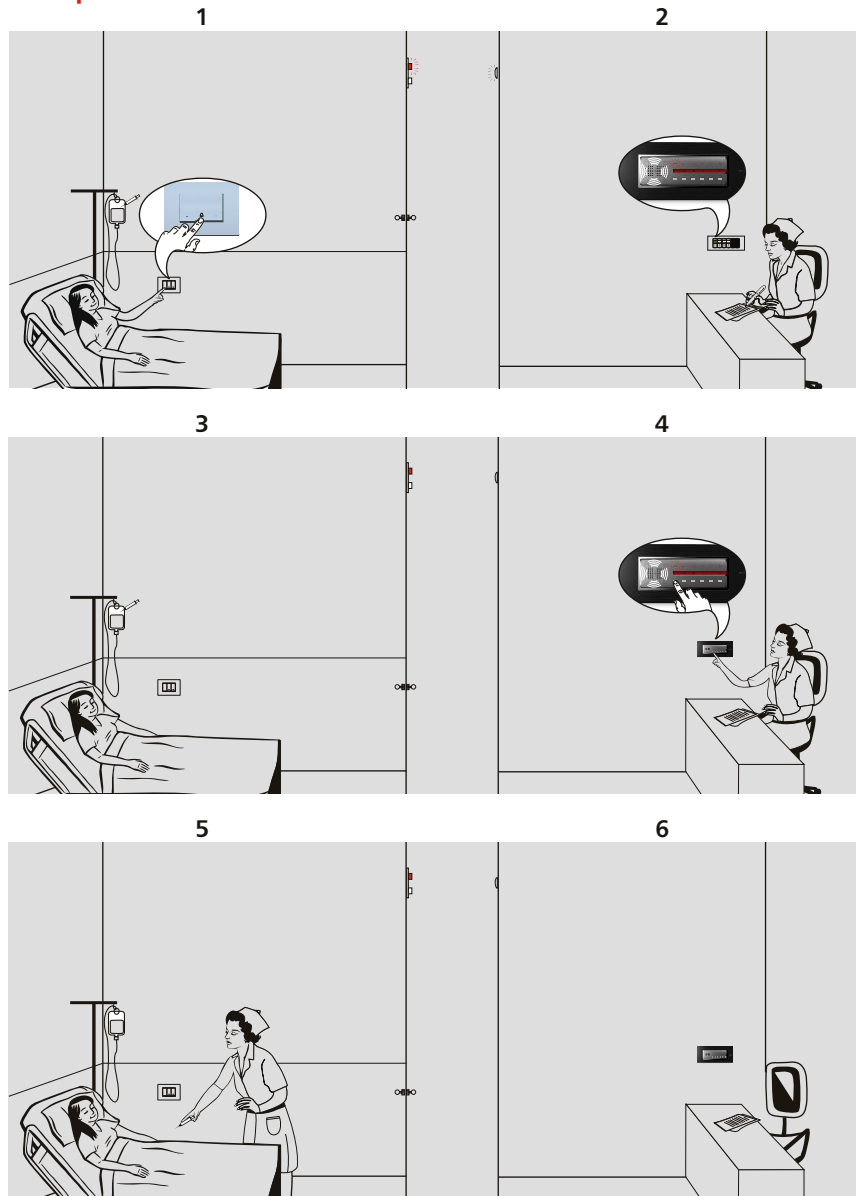
**Wiring Diagram**



106567

Six-to-one bell system with indication regarding call origin - ideal for hospitals, hotels, offices, etc.

**Example of use**



- 1) The patient makes a call by pressing the Bell push button
- 2) The bell rings to attract attention of the nurse. Call indication on 106567 is displayed indicating origin of the call.
- 3) The patient awaits response from the nurse.
- 4) Nurse acknowledges the call by pressing the push button on relevant 106567. The display indication on 106567 goes off
- 5) The nurse visits the origin of call to respond to the patient's request.
- 6) The nurse will return to attend to any other request on 106567