

SEE YOUR  
WORLD  
IN A BETTER  
LIGHT!

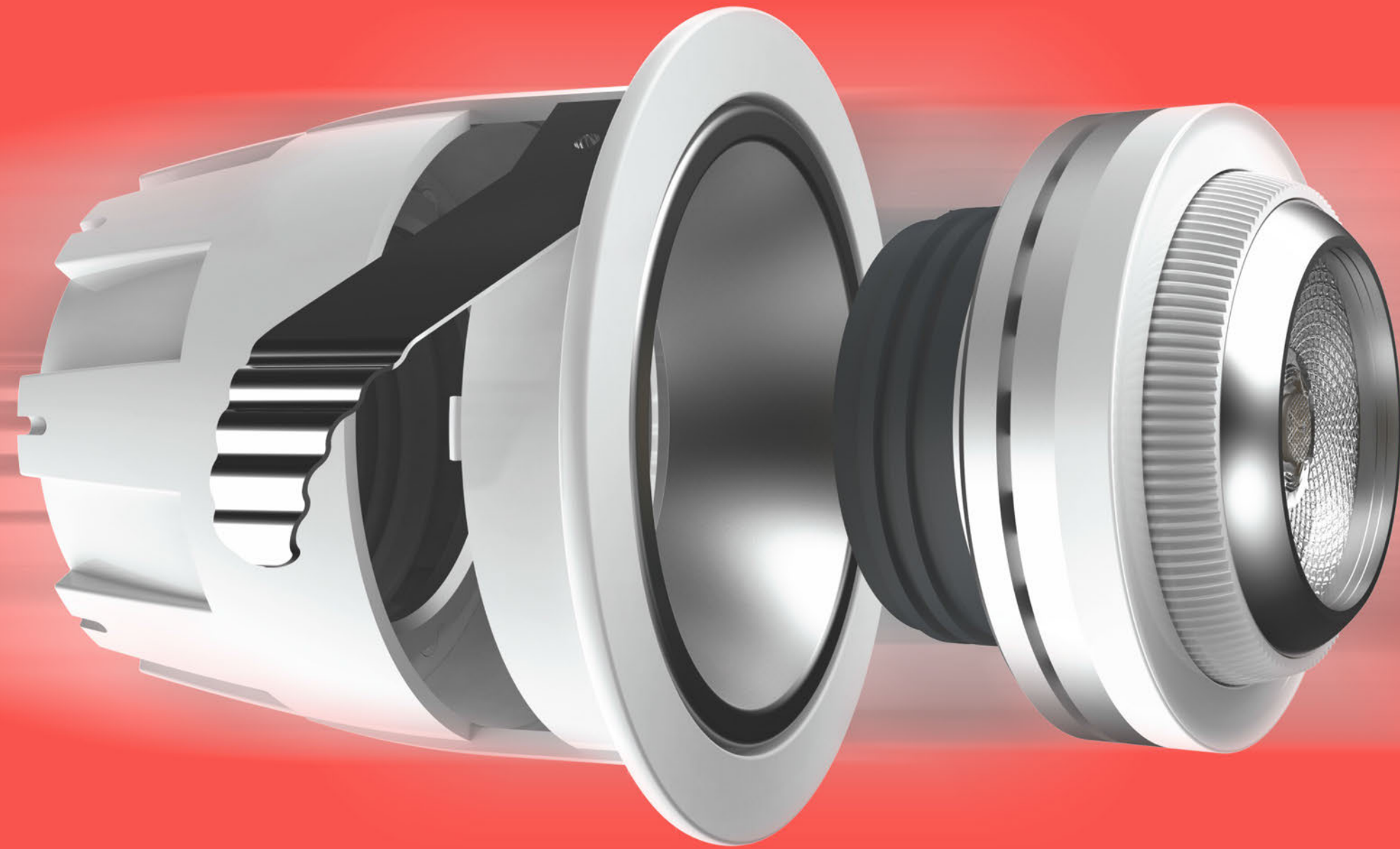


PRODUCTS  
AND TECHNICAL  
CATALOG



EDITION-01

[www.goldmedalindia.com/lighting](http://www.goldmedalindia.com/lighting)



# WE LIGHT UP YOUR WORLD!

For years, we electrified your homes and offices with world-class electrical devices. We made you smile, with products that understood your future needs. We introduced you to the latest innovations in electrical fittings. Now, Goldmedal is proud to present to you LEDs that are light-years ahead of the competition. Products that are the absolute best in lighting systems. We promise to illuminate your world with the very best in finish, usability and power savings. To light up your world like never before.





The good is the enemy of great. At Goldmedal, we believe that this is especially true in case of product design. To settle for good is easy. It is clearly proved by the number of good products that we are surrounded by. It's the rare product that can be classified as truly *great*.

The journey of creating great products is not simple. The distance from good to great requires a quantum leap. A leap of imagination, faith, engineering and team work. It's therefore not a surprise to know that very few organizations choose to follow this path. For Goldmedal, it was never a choice. The decision was already made, as far back as in 1979. To discard everything that is just good and to always aim for great. The new range of LED lights from Goldmedal is an example of truly great lighting products. Lighting solutions that are better than anything else available.

Experience the difference. See your world in a better light.

# CONTENTS

**01**

LED Panel Light 03-26  
G-Task, Pixel, Lumix, Orcus,  
G-Disk & Zolo

**02**

LED Down Light 27-42  
G-Glitz, Skylite  
Apollo, Apollo Plus & Tesla

**04**

COB Down Light 49-60  
G-Max, G-Max Plus, G-Tilt & Pluto

**07**

COB Spot Light 81-86  
G-Spin, Starlite & G-Drop

**11**

LED Strip Light 95-98  
Crimson LED Strip, Citron LED Strip &  
Clarion Rope Light

**03**

LED Surface Light 43-48  
Solitaire & Xylo

**05**

Down Light 61-74  
G-Twist (T1, T2, T3, T4, & T6), Zoom,  
Zoom Plus, Fabio & Simplo

**08**

Slim Panel Light 87-88  
G-Sky - 2x2 Slim LED Panel Light

**12**

Street & Flood Light 99-104  
LED Street Light - Optimus & Omega  
LED Flood Light - Xplora

**06**

LED Down Light 75-80  
G-Spiro, G-Dome, Atom, Oceano &  
Oceano Plus

**09**

LED Battens 89-92  
Aura, Espirit, G-power, Stylus,  
Magic Line, Vista & Matrix

**10**

LED Lamp 93-94  
Bloom Bulb & Genie Bulb





Welcome  
to a brighter future



What's the number one driver of progress in a country of a billion plus people? Without doubt, it's the humungous amount of energy that is required to power its daily needs! Whether it is homes, offices, institutes, shopping malls or factories, the need for reliable energy will be the single biggest factor that decides the future of our glorious nation.

So how do we ensure that this need for power doesn't trip our pursuit for growth and progress? We at Goldmedal have been grappling with this question for years. Along with quality electrical products, we've identified LEDs as the definitive solution.

Consuming just 50% of the energy required by fluorescent lights to generate a similar amount of light, LEDs can dramatically reduce energy consumption. They also produce negligible heat. This reduces overall cooling costs, enabling efficient use of power.

The LED story gets even better. Because LEDs consume less power, they are also more economical to use. They are also easy to install, transport and recycle. And environment-friendly. You can dispose them safely without damaging the surroundings.

At Goldmedal, we see the immense benefits that LEDs can offer to the nation and the planet as a whole. We are thus investing in the very best in LED technology so that we can optimize its benefits in every possible way. Whether it's indoors or outdoors, for practical purposes or decorative use, Goldmedal LEDs are manufactured with the future in mind.

Welcome to this bright future.



Lighting your world.  
Delighting your heart!



## SLIM PANEL *LIGHT*



### **G-TASK** SLIM PANEL LIGHT

**Features**

- Detachable drivers
- Modular design
- Die cast aluminium body
- Connectors for easy connections
- High bright LEDs
- In-built surge protection
- Anti-flickering

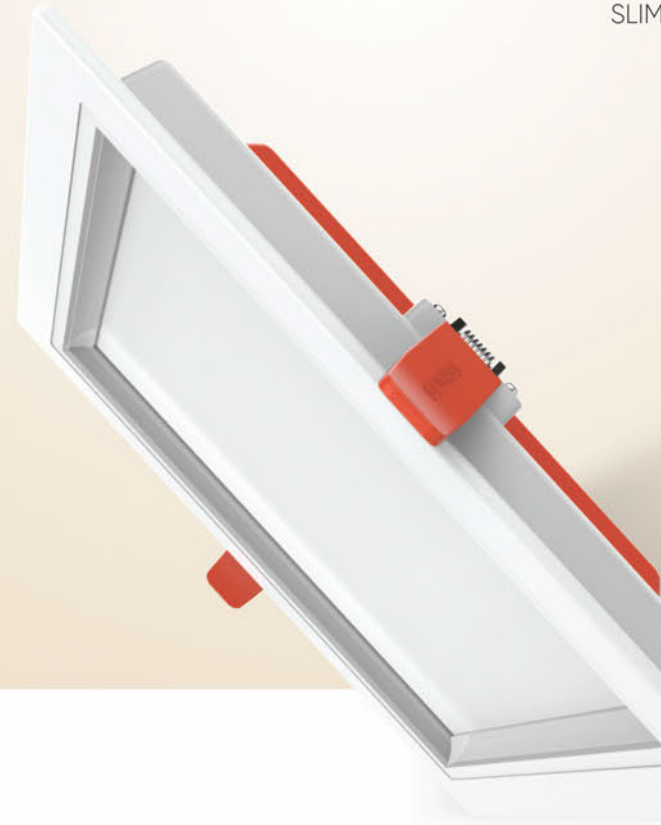
### **G-TASK LED PANEL LIGHT**

The ultra-sleek G-Task LED panels infuse a dash of style in any setting. The device comes with in-built, detachable drivers that have connectors for effortless connections. These features make the G-Task extremely easy to install, replace and maintain. Its high-quality, full-aluminium body, brilliant luminosity and zero-flicker properties make the G-Task a delightful choice in every way!





**G-TASK**  
SLIM PANEL LIGHT



| ITEM CODE                                    | POWER | COL. TEMP | PF   | DIMENSION | CUT OUT | CRI | BEAM ANGLE |
|--|-------|-----------|------|-----------|---------|-----|------------|
| <b>G-TASK - 8W Premium LED Panel - Round</b> |       |           |      |           |         |     |            |
| GL91225WW                                    | 8W    | 3000K     | >0.9 | ø125x32   | ø100    | >83 | 120°       |
| GL91225NW                                    | 8W    | 4000K     | >0.9 | ø125x32   | ø100    | >83 | 120°       |
| GL91225CD                                    | 8W    | 6000K     | >0.9 | ø125x32   | ø100    | >83 | 120°       |

| ITEM CODE                                     | POWER | COL. TEMP | PF   | DIMENSION | CUT OUT | CRI | BEAM ANGLE |
|---|-------|-----------|------|-----------|---------|-----|------------|
| <b>G-TASK - 12W Premium LED Panel - Round</b> |       |           |      |           |         |     |            |
| GL91226WW                                     | 12W   | 3000K     | >0.9 | ø150x32   | ø125    | >83 | 120°       |
| GL91226NW                                     | 12W   | 4000K     | >0.9 | ø150x32   | ø125    | >83 | 120°       |
| GL91226CD                                     | 12W   | 6000K     | >0.9 | ø150x32   | ø125    | >83 | 120°       |

| ITEM CODE                                     | POWER | COL. TEMP | PF   | DIMENSION | CUT OUT | CRI | BEAM ANGLE |
|---|-------|-----------|------|-----------|---------|-----|------------|
| <b>G-TASK - 18W Premium LED Panel - Round</b> |       |           |      |           |         |     |            |
| GL91228WW                                     | 18W   | 3000K     | >0.9 | ø175x32   | ø150    | >83 | 120°       |
| GL91228NW                                     | 18W   | 4000K     | >0.9 | ø175x32   | ø150    | >83 | 120°       |
| GL91228CD                                     | 18W   | 6000K     | >0.9 | ø175x32   | ø150    | >83 | 120°       |

| ITEM CODE                                     | POWER | COL. TEMP | PF   | DIMENSION | CUT OUT | CRI | BEAM ANGLE |
|---|-------|-----------|------|-----------|---------|-----|------------|
| <b>G-TASK - 25W Premium LED Panel - Round</b> |       |           |      |           |         |     |            |
| GL91229WW                                     | 25W   | 3000K     | >0.9 | ø225x32   | ø200    | >83 | 120°       |
| GL91229NW                                     | 25W   | 4000K     | >0.9 | ø225x32   | ø200    | >83 | 120°       |
| GL91229CD                                     | 25W   | 6000K     | >0.9 | ø225x32   | ø200    | >83 | 120°       |

| ITEM CODE                                     | POWER | COL. TEMP | PF   | PEUT OUTDIMENSION | CUT OUT | CRI | BEAM ANGLE |
|---|-------|-----------|------|-------------------|---------|-----|------------|
| <b>G-TASK - 8W Premium LED Panel - Square</b> |       |           |      |                   |         |     |            |
| GL92225WW                                     | 8W    | 3000K     | >0.9 | 125x125x32        | 100x100 | >83 | 120°       |
| GL92225NW                                     | 8W    | 4000K     | >0.9 | 125x125x32        | 100x100 | >83 | 120°       |
| GL92225CD                                     | 8W    | 6000K     | >0.9 | 125x125x32        | 100x100 | >83 | 120°       |

| ITEM CODE                                      | POWER | COL. TEMP | PF   | PEUT OUTDIMENSION | CUT OUT | CRI | BEAM ANGLE |
|--|-------|-----------|------|-------------------|---------|-----|------------|
| <b>G-TASK - 12W Premium LED Panel - Square</b> |       |           |      |                   |         |     |            |
| GL92226WW                                      | 12W   | 3000K     | >0.9 | 150x150x32        | 125x125 | >83 | 120°       |
| GL92226NW                                      | 12W   | 4000K     | >0.9 | 150x150x32        | 125x125 | >83 | 120°       |
| GL92226CD                                      | 12W   | 6000K     | >0.9 | 150x150x32        | 125x125 | >83 | 120°       |

| ITEM CODE                                      | POWER | COL. TEMP | PF   | PEUT OUTDIMENSION | CUT OUT | CRI | BEAM ANGLE |
|--|-------|-----------|------|-------------------|---------|-----|------------|
| <b>G-TASK - 18W Premium LED Panel - Square</b> |       |           |      |                   |         |     |            |
| GL92228WW                                      | 18W   | 3000K     | >0.9 | 175x175x32        | 150x150 | >83 | 120°       |
| GL92228NW                                      | 18W   | 4000K     | >0.9 | 175x175x32        | 150x150 | >83 | 120°       |
| GL92228CD                                      | 18W   | 6000K     | >0.9 | 175x175x32        | 150x150 | >83 | 120°       |

| ITEM CODE                                      | POWER | COL. TEMP | PF   | PEUT OUTDIMENSION | CUT OUT | CRI | BEAM ANGLE |
|--|-------|-----------|------|-------------------|---------|-----|------------|
| <b>G-TASK - 25W Premium LED Panel - Square</b> |       |           |      |                   |         |     |            |
| GL92229WW                                      | 25W   | 3000K     | >0.9 | 225x225x32        | 200x200 | >83 | 120°       |
| GL92229NW                                      | 25W   | 4000K     | >0.9 | 225x225x32        | 200x200 | >83 | 120°       |
| GL92229CD                                      | 25W   | 6000K     | >0.9 | 225x225x32        | 200x200 | >83 | 120°       |

All dimensions are in mm

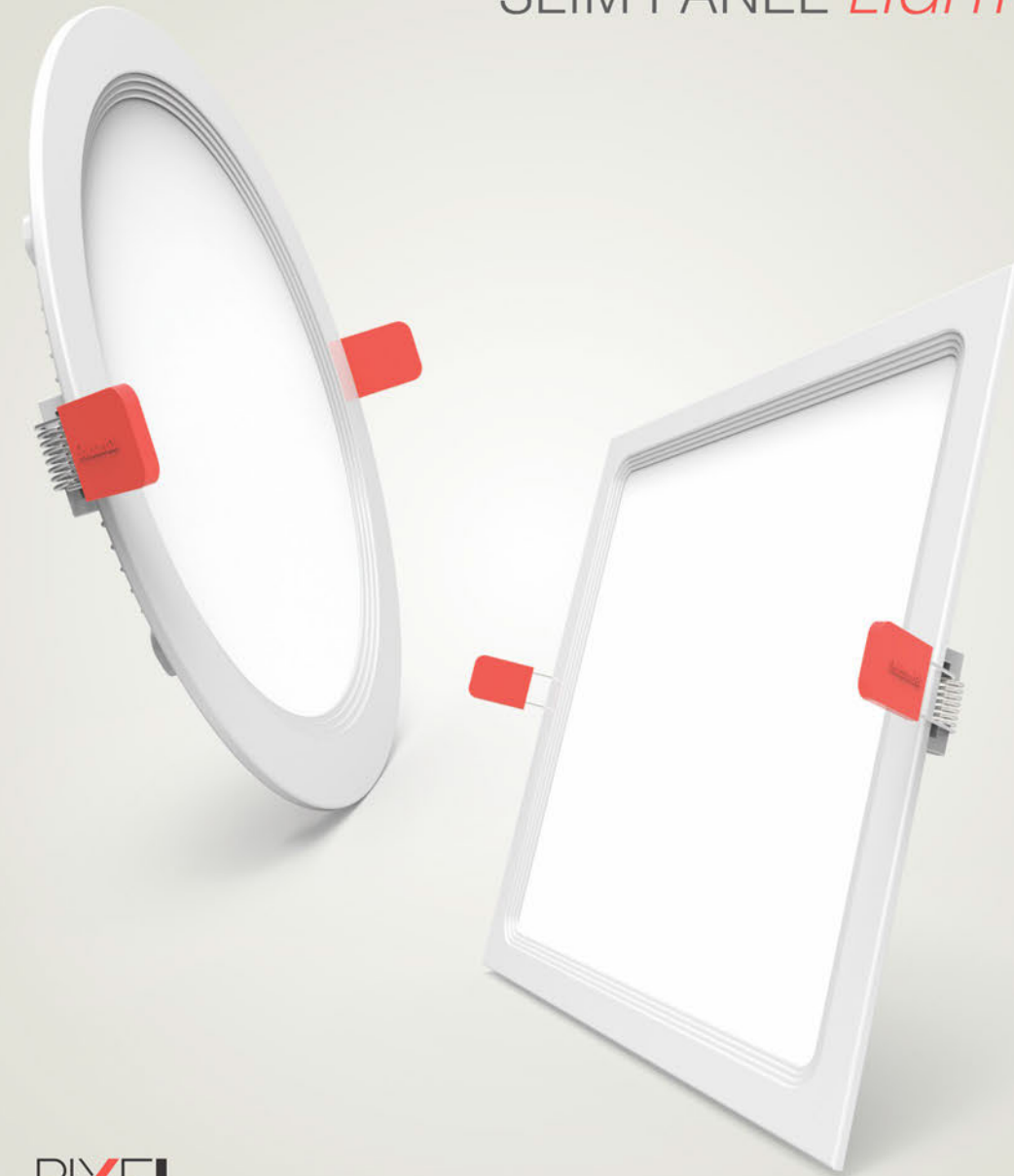
The slimmest model  
in town!



**PIXEL LED PANEL LIGHT**

One of the thinnest LED panels in the world, the Pixel is an absolutely gorgeous piece of engineering. Adding to the appeal of the Pixel is the high grade powder coating around its full aluminum body that gives it a flawless appearance. With surge protection and high power factor, the Pixel finds easy application in both indoor and outdoor settings.

SLIM PANEL *LIGHT*



**PIXEL**  
SLIM PANEL LIGHT

**Features**

- Extremely slim LED Panel
- High power factor
- Surge protection upto 2.5KV
- Die cast aluminium body
- High grade powder coating





| ITEM CODE                                      | POWER | COL. TEMP | PF   | DIMENSION | CUT OUT | CRI | BEAM ANGLE |
|--|-------|-----------|------|-----------|---------|-----|------------|
| <b>PIXEL - 3W Ultra Slim LED Panel - Round</b> |       |           |      |           |         |     |            |
| GL91216WW                                      | 3W    | 3000K     | >0.6 | ø90x13    | ø80     | >85 | 120°       |
| GL91216NW                                      | 3W    | 4000K     | >0.6 | ø90x13    | ø80     | >85 | 120°       |
| GL91216CD                                      | 3W    | 6000K     | >0.6 | ø90x13    | ø80     | >85 | 120°       |



| ITEM CODE                                      | POWER | COL. TEMP | PF   | DIMENSION | CUT OUT | CRI | BEAM ANGLE |
|--|-------|-----------|------|-----------|---------|-----|------------|
| <b>PIXEL - 6W Ultra Slim LED Panel - Round</b> |       |           |      |           |         |     |            |
| GL91217WW                                      | 6W    | 3000K     | >0.9 | ø120x13   | ø110    | >85 | 120°       |
| GL91217NW                                      | 6W    | 4000K     | >0.9 | ø120x13   | ø110    | >85 | 120°       |
| GL91217CD                                      | 6W    | 6000K     | >0.9 | ø120x13   | ø110    | >85 | 120°       |



| ITEM CODE                                       | POWER | COL. TEMP | PF   | DIMENSION | CUT OUT | CRI | BEAM ANGLE |
|---|-------|-----------|------|-----------|---------|-----|------------|
| <b>PIXEL - 12W Ultra Slim LED Panel - Round</b> |       |           |      |           |         |     |            |
| GL91218WW                                       | 12W   | 3000K     | >0.9 | ø172x13   | ø160    | >85 | 120°       |
| GL91218NW                                       | 12W   | 4000K     | >0.9 | ø172x13   | ø160    | >85 | 120°       |
| GL91218CD                                       | 12W   | 6000K     | >0.9 | ø172x13   | ø160    | >85 | 120°       |



| ITEM CODE                                       | POWER | COL. TEMP | PF   | DIMENSION | CUT OUT | CRI | BEAM ANGLE |
|---|-------|-----------|------|-----------|---------|-----|------------|
| <b>PIXEL - 15W Ultra Slim LED Panel - Round</b> |       |           |      |           |         |     |            |
| GL91219WW                                       | 15W   | 3000K     | >0.9 | ø190x13   | ø180    | >85 | 120°       |
| GL91219NW                                       | 15W   | 4000K     | >0.9 | ø190x13   | ø180    | >85 | 120°       |
| GL91219CD                                       | 15W   | 6000K     | >0.9 | ø190x13   | ø180    | >85 | 120°       |



| ITEM CODE                                       | POWER | COL. TEMP | PF   | DIMENSION | CUT OUT | CRI | BEAM ANGLE |
|---|-------|-----------|------|-----------|---------|-----|------------|
| <b>PIXEL - 18W Ultra Slim LED Panel - Round</b> |       |           |      |           |         |     |            |
| GL91220WW                                       | 18W   | 3000K     | >0.9 | ø225x13   | ø210    | >85 | 120°       |
| GL91220NW                                       | 18W   | 4000K     | >0.9 | ø225x13   | ø210    | >85 | 120°       |
| GL91220CD                                       | 18W   | 6000K     | >0.9 | ø225x13   | ø210    | >85 | 120°       |



| ITEM CODE                                       | POWER | COL. TEMP | PF   | DIMENSION | CUT OUT | CRI | BEAM ANGLE |
|---|-------|-----------|------|-----------|---------|-----|------------|
| <b>PIXEL - 3W Ultra Slim LED Panel - Square</b> |       |           |      |           |         |     |            |
| GL92216WW                                       | 3W    | 3000K     | >0.6 | 90x90x13  | 80x80   | >85 | 120°       |
| GL92216NW                                       | 3W    | 4000K     | >0.6 | 90x90x13  | 80x80   | >85 | 120°       |
| GL92216CD                                       | 3W    | 6000K     | >0.6 | 90x90x13  | 80x80   | >85 | 120°       |



| ITEM CODE                                       | POWER | COL. TEMP | PF   | DIMENSION  | CUT OUT | CRI | BEAM ANGLE |
|---|-------|-----------|------|------------|---------|-----|------------|
| <b>PIXEL - 6W Ultra Slim LED Panel - Square</b> |       |           |      |            |         |     |            |
| GL92217WW                                       | 6W    | 3000K     | >0.9 | 120x120x13 | 110x110 | >85 | 120°       |
| GL92217NW                                       | 6W    | 4000K     | >0.9 | 120x120x13 | 110x110 | >85 | 120°       |
| GL92217CD                                       | 6W    | 6000K     | >0.9 | 120x120x13 | 110x110 | >85 | 120°       |



| ITEM CODE  | POWER | COL. TEMP | PF   | DIMENSION  | CUT OUT | CRI | BEAM ANGLE |
|--|-------|-----------|------|------------|---------|-----|------------|
| <b>PIXEL - 12W Ultra Slim LED Panel - Square</b> |       |           |      |            |         |     |            |
| GL92218WW  | 12W   | 3000K     | >0.9 | 172x172x13 | 160x160 | >85 | 120°       |
| GL92218NW  | 12W   | 4000K     | >0.9 | 172x172x13 | 160x160 | >85 | 120°       |
| GL92218CD  | 12W   | 6000K     | >0.9 | 172x172x13 | 160x160 | >85 | 120°       |



| ITEM CODE  | POWER | COL. TEMP | PF   | DIMENSION  | CUT OUT | CRI | BEAM ANGLE |
|--|-------|-----------|------|------------|---------|-----|------------|
| <b>PIXEL - 15W Ultra Slim LED Panel - Square</b> |       |           |      |            |         |     |            |
| GL92219WW  | 15W   | 3000K     | >0.9 | 190x190x13 | 180x180 | >85 | 120°       |
| GL92219NW  | 15W   | 4000K     | >0.9 | 190x190x13 | 180x180 | >85 | 120°       |
| GL92219CD  | 15W   | 6000K     | >0.9 | 190x190x13 | 180x180 | >85 | 120°       |



| ITEM CODE  | POWER | COL. TEMP | PF   | DIMENSION  | CUT OUT | CRI | BEAM ANGLE |
|--|-------|-----------|------|------------|---------|-----|------------|
| <b>PIXEL - 18W Ultra Slim LED Panel - Square</b> |       |           |      |            |         |     |            |
| GL92220WW  | 18W   | 3000K     | >0.9 | 225x225x13 | 210x210 | >85 | 120°       |
| GL92220NW  | 18W   | 4000K     | >0.9 | 225x225x13 | 210x210 | >85 | 120°       |
| GL92220CD  | 18W   | 6000K     | >0.9 | 225x225x13 | 210x210 | >85 | 120°       |

All dimensions are in mm

More than just lights.  
A world of delights.



SLIM PANEL *LIGHT*

**LUMIX**  
SLIM PANEL LIGHT

**ORCUS**  
SLIM PANEL LIGHT

**LUMIX & ORCUS LED PANEL LIGHT**

The Lumix is a high bright LED panel that can be used in both home as well as office environments. Available in round as well as square shapes, the Lumix can be fixed flush with the ceiling for that sleek, minimalistic look. Born with the genes of a marathon runner, the Orcus simply keeps going on and on. The secret to its longevity is a special metal heat sink that draws heat away from the LEDs. This efficiently enables the Orcus to outperform ordinary LEDs by a mile!

**Features**

- Extremely slim, elegant look
- Die cast aluminium body
- Eco-friendly, energy saving
- High grade powder coating
- High bright LEDs





| ITEM CODE                                | POWER | COL. TEMP | PF   | DIMENSION | CUT OUT | CRI | BEAM ANGLE |
|--|-------|-----------|------|-----------|---------|-----|------------|
| <b>LUMIX - 6W Slim LED Panel - Round</b> |       |           |      |           |         |     |            |
| GL91201WW                                | 6W    | 3000K     | >0.9 | ø126x25   | ø110    | >85 | 115°       |
| GL91201NW                                | 6W    | 4000K     | >0.9 | ø126x25   | ø110    | >85 | 115°       |
| GL91201CD                                | 6W    | 6000K     | >0.9 | ø126x25   | ø110    | >85 | 115°       |



| ITEM CODE                                 | POWER | COL. TEMP | PF   | DIMENSION | CUT OUT | CRI | BEAM ANGLE |
|---|-------|-----------|------|-----------|---------|-----|------------|
| <b>LUMIX - 12W Slim LED Panel - Round</b> |       |           |      |           |         |     |            |
| GL91202WW                                 | 12W   | 3000K     | >0.9 | ø178x25   | ø160    | >85 | 115°       |
| GL91202NW                                 | 12W   | 4000K     | >0.9 | ø178x25   | ø160    | >85 | 115°       |
| GL91202CD                                 | 12W   | 6000K     | >0.9 | ø178x25   | ø160    | >85 | 115°       |



| ITEM CODE                                 | POWER | COL. TEMP | PF   | DIMENSION | CUT OUT | CRI | BEAM ANGLE |
|---|-------|-----------|------|-----------|---------|-----|------------|
| <b>LUMIX - 15W Slim LED Panel - Round</b> |       |           |      |           |         |     |            |
| GL91203WW                                 | 15W   | 3000K     | >0.9 | ø190x25   | ø178    | >85 | 115°       |
| GL91203NW                                 | 15W   | 4000K     | >0.9 | ø190x25   | ø178    | >85 | 115°       |
| GL91203CD                                 | 15W   | 6000K     | >0.9 | ø190x25   | ø178    | >85 | 115°       |



| ITEM CODE                                 | POWER | COL. TEMP | PF   | DIMENSION | CUT OUT | CRI | BEAM ANGLE |
|---|-------|-----------|------|-----------|---------|-----|------------|
| <b>LUMIX - 18W Slim LED Panel - Round</b> |       |           |      |           |         |     |            |
| GL91204WW                                 | 18W   | 3000K     | >0.9 | ø225x25   | ø210    | >85 | 115°       |
| GL91204NW                                 | 18W   | 4000K     | >0.9 | ø225x25   | ø210    | >85 | 115°       |
| GL91204CD                                 | 18W   | 6000K     | >0.9 | ø225x25   | ø210    | >85 | 115°       |

| ITEM CODE                                 | POWER | COL. TEMP | PF   | DIMENSION  | CUT OUT | CRI | BEAM ANGLE |
|---|-------|-----------|------|------------|---------|-----|------------|
| <b>LUMIX - 6W Slim LED Panel - Square</b> |       |           |      |            |         |     |            |
| GL92201WW                                 | 6W    | 3000K     | >0.9 | 126x126x25 | 110x110 | >85 | 115°       |
| GL92201NW                                 | 6W    | 4000K     | >0.9 | 126x126x25 | 110x110 | >85 | 115°       |
| GL92201CD                                 | 6W    | 6000K     | >0.9 | 126x126x25 | 110x110 | >85 | 115°       |



| ITEM CODE                                  | POWER | COL. TEMP | PF   | DIMENSION  | CUT OUT | CRI | BEAM ANGLE |
|--|-------|-----------|------|------------|---------|-----|------------|
| <b>LUMIX - 12W Slim LED Panel - Square</b> |       |           |      |            |         |     |            |
| GL92202WW                                  | 12W   | 3000K     | >0.9 | 178x178x25 | 160x160 | >85 | 115°       |
| GL92202NW                                  | 12W   | 4000K     | >0.9 | 178x178x25 | 160x160 | >85 | 115°       |
| GL92202CD                                  | 12W   | 6000K     | >0.9 | 178x178x25 | 160x160 | >85 | 115°       |



| ITEM CODE                                  | POWER | COL. TEMP | PF   | DIMENSION  | CUT OUT | CRI | BEAM ANGLE |
|--|-------|-----------|------|------------|---------|-----|------------|
| <b>LUMIX - 15W Slim LED Panel - Square</b> |       |           |      |            |         |     |            |
| GL92203WW                                  | 15W   | 3000K     | >0.9 | 190x190x25 | 178x178 | >85 | 115°       |
| GL92203NW                                  | 15W   | 4000K     | >0.9 | 190x190x25 | 178x178 | >85 | 115°       |
| GL92203CD                                  | 15W   | 6000K     | >0.9 | 190x190x25 | 178x178 | >85 | 115°       |



| ITEM CODE                                  | POWER | COL. TEMP | PF   | DIMENSION  | CUT OUT | CRI | BEAM ANGLE |
|--|-------|-----------|------|------------|---------|-----|------------|
| <b>LUMIX - 18W Slim LED Panel - Square</b> |       |           |      |            |         |     |            |
| GL92204WW                                  | 18W   | 3000K     | >0.9 | 225x225x25 | 210x210 | >85 | 115°       |
| GL92204NW                                  | 18W   | 4000K     | >0.9 | 225x225x25 | 210x210 | >85 | 115°       |
| GL92204CD                                  | 18W   | 6000K     | >0.9 | 225x225x25 | 210x210 | >85 | 115°       |



All dimensions are in mm



| ITEM CODE                           | POWER | COL. TEMP | PF   | DIMENSION | CUT OUT | CRI | BEAM ANGLE |
|-------------------------------------|-------|-----------|------|-----------|---------|-----|------------|
| <b>ORCUS - 5W LED Panel - Round</b> |       |           |      |           |         |     |            |
| GL91208WW                           | 5W    | 3000K     | >0.9 | ø144x21   | ø130    | >85 | 115°       |
| GL91208NW                           | 5W    | 4000K     | >0.9 | ø144x21   | ø130    | >85 | 115°       |
| GL91208CD                           | 5W    | 6000K     | >0.9 | ø144x21   | ø130    | >85 | 115°       |



| ITEM CODE                           | POWER | COL. TEMP | PF   | DIMENSION | CUT OUT | CRI | BEAM ANGLE |
|-------------------------------------|-------|-----------|------|-----------|---------|-----|------------|
| <b>ORCUS - 8W LED Panel - Round</b> |       |           |      |           |         |     |            |
| GL91209WW                           | 8W    | 3000K     | >0.9 | ø144x21   | ø130    | >85 | 115°       |
| GL91209NW                           | 8W    | 4000K     | >0.9 | ø144x21   | ø130    | >85 | 115°       |
| GL91209CD                           | 8W    | 6000K     | >0.9 | ø144x21   | ø130    | >85 | 115°       |



| ITEM CODE                            | POWER | COL. TEMP | PF   | DIMENSION | CUT OUT | CRI | BEAM ANGLE |
|--------------------------------------|-------|-----------|------|-----------|---------|-----|------------|
| <b>ORCUS - 16W LED Panel - Round</b> |       |           |      |           |         |     |            |
| GL91211WW                            | 16W   | 3000K     | >0.9 | ø190x21   | ø175    | >85 | 115°       |
| GL91211NW                            | 16W   | 4000K     | >0.9 | ø190x21   | ø175    | >85 | 115°       |
| GL91211CD                            | 16W   | 6000K     | >0.9 | ø190x21   | ø175    | >85 | 115°       |



| ITEM CODE                            | POWER | COL. TEMP | PF   | DIMENSION | CUT OUT | CRI | BEAM ANGLE |
|--------------------------------------|-------|-----------|------|-----------|---------|-----|------------|
| <b>ORCUS - 22W LED Panel - Round</b> |       |           |      |           |         |     |            |
| GL91213WW                            | 22W   | 3000K     | >0.9 | ø235x21   | ø220    | >85 | 115°       |
| GL91213NW                            | 22W   | 4000K     | >0.9 | ø235x21   | ø220    | >85 | 115°       |
| GL91213CD                            | 22W   | 6000K     | >0.9 | ø235x21   | ø220    | >85 | 115°       |

| ITEM CODE                            | POWER | COL. TEMP | PF   | DIMENSION  | CUT OUT | CRI | BEAM ANGLE |
|--------------------------------------|-------|-----------|------|------------|---------|-----|------------|
| <b>ORCUS - 5W LED Panel - Square</b> |       |           |      |            |         |     |            |
| GL92208WW                            | 5W    | 3000K     | >0.9 | 144x144x21 | 130x130 | >85 | 115°       |
| GL92208NW                            | 5W    | 4000K     | >0.9 | 144x144x21 | 130x130 | >85 | 115°       |
| GL92208CD                            | 5W    | 6000K     | >0.9 | 144x144x21 | 130x130 | >85 | 115°       |



| ITEM CODE                            | POWER | COL. TEMP | PF   | DIMENSION  | CUT OUT | CRI | BEAM ANGLE |
|--------------------------------------|-------|-----------|------|------------|---------|-----|------------|
| <b>ORCUS - 8W LED Panel - Square</b> |       |           |      |            |         |     |            |
| GL92209WW                            | 8W    | 3000K     | >0.9 | 144x144x21 | 130x130 | >85 | 115°       |
| GL92209NW                            | 8W    | 4000K     | >0.9 | 144x144x21 | 130x130 | >85 | 115°       |
| GL92209CD                            | 8W    | 6000K     | >0.9 | 144x144x21 | 130x130 | >85 | 115°       |



| ITEM CODE                             | POWER | COL. TEMP | PF   | DIMENSION  | CUT OUT | CRI | BEAM ANGLE |
|---------------------------------------|-------|-----------|------|------------|---------|-----|------------|
| <b>ORCUS - 16W LED Panel - Square</b> |       |           |      |            |         |     |            |
| GL92211WW                             | 16W   | 3000K     | >0.9 | 190x190x21 | 175x175 | >85 | 115°       |
| GL92211NW                             | 16W   | 4000K     | >0.9 | 190x190x21 | 175x175 | >85 | 115°       |
| GL92211CD                             | 16W   | 6000K     | >0.9 | 190x190x21 | 175x175 | >85 | 115°       |



| ITEM CODE                             | POWER | COL. TEMP | PF   | DIMENSION  | CUT OUT | CRI | BEAM ANGLE |
|---------------------------------------|-------|-----------|------|------------|---------|-----|------------|
| <b>ORCUS - 22W LED Panel - Square</b> |       |           |      |            |         |     |            |
| GL92213WW                             | 22W   | 3000K     | >0.9 | 235x235x21 | 220x220 | >85 | 115°       |
| GL92213NW                             | 22W   | 4000K     | >0.9 | 235x235x21 | 220x220 | >85 | 115°       |
| GL92213CD                             | 22W   | 6000K     | >0.9 | 235x235x21 | 220x220 | >85 | 115°       |



All dimensions are in mm



The perfect light.  
In any setting.



### G-DISC LED PANEL LIGHT

Encased in a fully polycarbonate body, the G-Disc is one of the lightest LED downlights you will come across. Along with in-built surge protection, the G-Disc also uses advanced in-built drivers that eliminates LED flicker thus making it the perfect choice for those engaged in productive activities. Available in square and round shapes, the G-Disc is modern, practical and truly innovative.

## SLIM PANEL *LIGHT*



### **G-disc** SLIM PANEL LIGHT

#### Features

- In-built driver
- Light, polycarbonate body
- Anti-flicker LED light
- In-built surge protection
- High power factor



| ITEM CODE   | POWER | COL. TEMP | PF    | DIMENSION | CUT OUT | CRI | BEAM ANGLE |
|---|-------|-----------|-------|-----------|---------|-----|------------|
| <b>G-DISC - 6W Slim LED Panel with inbuilt driver - Round</b> |       |           |       |           |         |     |            |
| GL91233WW   | 6W    | 3000K     | >0.85 | ø121x29   | ø105    | >80 | 115°       |
| GL91233NW   | 6W    | 4000K     | >0.85 | ø121x29   | ø105    | >80 | 115°       |
| GL91233CD   | 6W    | 6000K     | >0.85 | ø121x29   | ø105    | >80 | 115°       |



| ITEM CODE  | POWER | COL. TEMP | PF    | DIMENSION | CUT OUT | CRI | BEAM ANGLE |
|--|-------|-----------|-------|-----------|---------|-----|------------|
| <b>G-DISC - 12W Slim LED Panel with inbuilt driver - Round</b> |       |           |       |           |         |     |            |
| GL91234WW  | 12W   | 3000K     | >0.85 | ø171x29   | ø155    | >80 | 115°       |
| GL91234NW  | 12W   | 4000K     | >0.85 | ø171x29   | ø155    | >80 | 115°       |
| GL91234CD  | 12W   | 6000K     | >0.85 | ø171x29   | ø155    | >80 | 115°       |



| ITEM CODE  | POWER | COL. TEMP | PF    | DIMENSION | CUT OUT | CRI | BEAM ANGLE |
|--|-------|-----------|-------|-----------|---------|-----|------------|
| <b>G-DISC - 18W Slim LED Panel with inbuilt driver - Round</b> |       |           |       |           |         |     |            |
| GL91236WW  | 18W   | 3000K     | >0.85 | ø226x29   | ø210    | >80 | 115°       |
| GL91236NW  | 18W   | 4000K     | >0.85 | ø226x29   | ø210    | >80 | 115°       |
| GL91236CD  | 18W   | 6000K     | >0.85 | ø226x29   | ø210    | >80 | 115°       |



| ITEM CODE  | POWER | COL. TEMP | PF    | DIMENSION  | CUT OUT | CRI | BEAM ANGLE |
|--|-------|-----------|-------|------------|---------|-----|------------|
| <b>G-DISC - 6W Slim LED Panel with inbuilt driver - Square</b> |       |           |       |            |         |     |            |
| GL92233WW  | 6W    | 3000K     | >0.85 | 121x121x29 | 105x105 | >80 | 115°       |
| GL92233NW  | 6W    | 4000K     | >0.85 | 121x121x29 | 105x105 | >80 | 115°       |
| GL92233CD  | 6W    | 6000K     | >0.85 | 121x121x29 | 105x105 | >80 | 115°       |



| ITEM CODE   | POWER | COL. TEMP | PF    | DIMENSION  | CUT OUT | CRI | BEAM ANGLE |
|---|-------|-----------|-------|------------|---------|-----|------------|
| <b>G-DISC - 12W Slim LED Panel with inbuilt driver - Square</b> |       |           |       |            |         |     |            |
| GL92234WW   | 12W   | 3000K     | >0.85 | 171x171x29 | 155x155 | >80 | 115°       |
| GL92234NW   | 12W   | 4000K     | >0.85 | 171x171x29 | 155x155 | >80 | 115°       |
| GL92234CD   | 12W   | 6000K     | >0.85 | 171x171x29 | 155x155 | >80 | 115°       |

| ITEM CODE   | POWER | COL. TEMP | PF    | DIMENSION  | CUT OUT | CRI | BEAM ANGLE |
|---|-------|-----------|-------|------------|---------|-----|------------|
| <b>G-DISC - 18W Slim LED Panel with inbuilt driver - Square</b> |       |           |       |            |         |     |            |
| GL92236WW   | 18W   | 3000K     | >0.85 | 226x226x29 | 210x210 | >80 | 115°       |
| GL92236NW   | 18W   | 4000K     | >0.85 | 226x226x29 | 210x210 | >80 | 115°       |
| GL92236CD   | 18W   | 6000K     | >0.85 | 226x226x29 | 210x210 | >80 | 115°       |



**G-disc**  
SLIM PANEL LIGHT

All dimensions are in mm



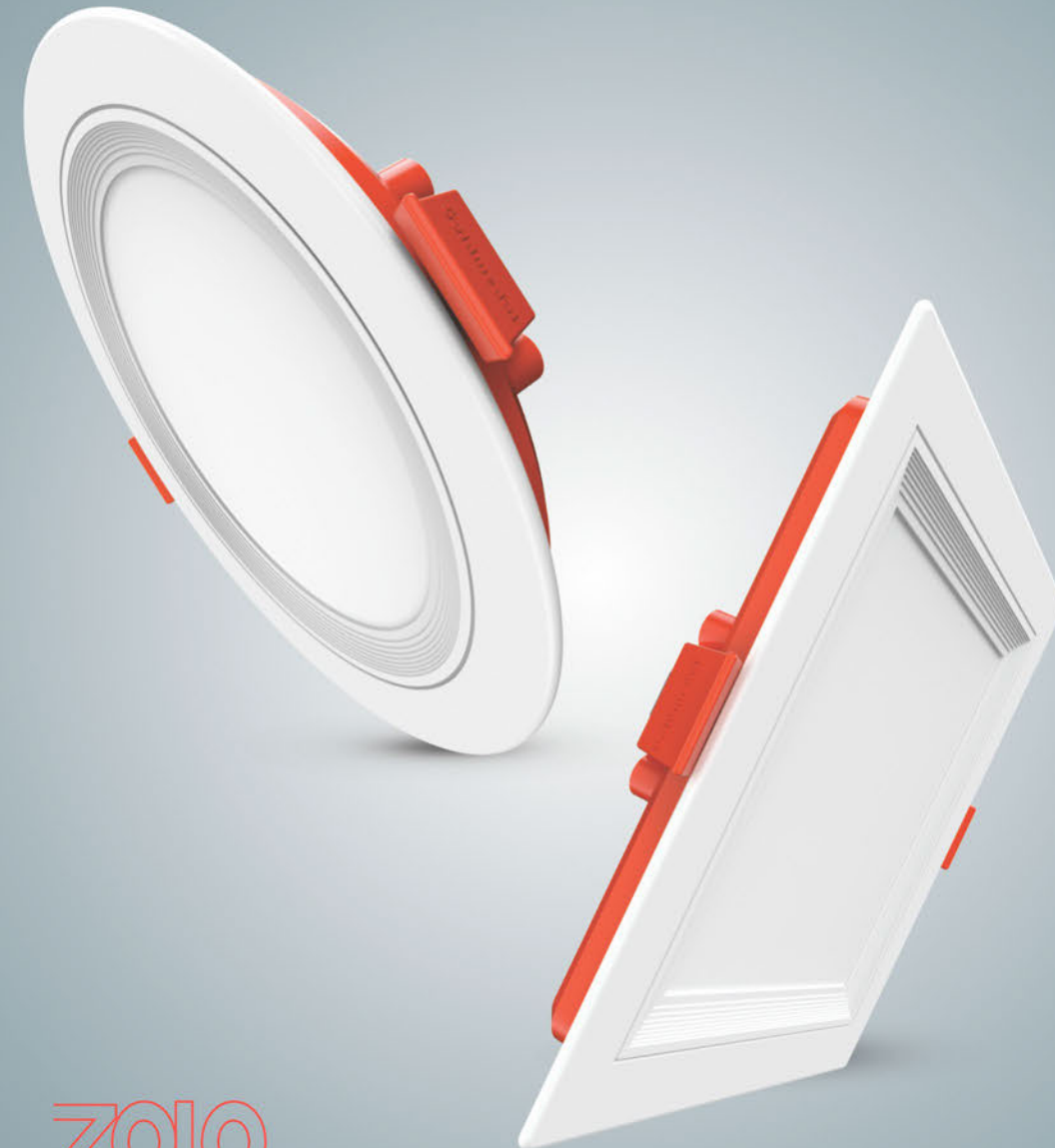
Everything you can  
imagine. And a few  
that you can't.



### ZOLO LED PANEL LIGHT

Extremely slim and light-weight, the Zolo LED Panel with its high power factor is an excellent choice for stylish interiors. Its ultra-slim shape makes it suitable for both domestic as well as commercial use. Its in-built drivers makes it easy to install and maintain while the cost-savings, environment-friendly features and durability makes it the ideal choice for anyone looking for something new and inspiring!

## SLIM PANEL *LIGHT*



**ZOLO**  
SLIM PANEL LIGHT

#### Features

- Extremely slim panels • In-built driver
- Light, polycarbonate body • In-built surge protection
- High power factor



| ITEM CODE   | POWER | COL. TEMP | PF   | DIMENSION | CUT OUT | CRI | BEAM ANGLE |
|---|-------|-----------|------|-----------|---------|-----|------------|
| <b>ZOLO - 3W Slim LED Panel with inbuilt driver - Round</b> |       |           |      |           |         |     |            |
| GL91240WW   | 3W    | 3000K     | >0.6 | ø86x28.5  | ø75     | >80 | 120°       |
| GL91240NW   | 3W    | 4000K     | >0.6 | ø86x28.5  | ø75     | >80 | 120°       |
| GL91240CD   | 3W    | 6000K     | >0.6 | ø86x28.5  | ø75     | >80 | 120°       |



| ITEM CODE   | POWER | COL. TEMP | PF   | DIMENSION | CUT OUT | CRI | BEAM ANGLE |
|---|-------|-----------|------|-----------|---------|-----|------------|
| <b>ZOLO - 6W Slim LED Panel with inbuilt driver - Round</b> |       |           |      |           |         |     |            |
| GL91241WW   | 6W    | 3000K     | >0.6 | ø120x28.5 | ø105    | >80 | 120°       |
| GL91241NW   | 6W    | 4000K     | >0.6 | ø120x28.5 | ø105    | >80 | 120°       |
| GL91241CD   | 6W    | 6000K     | >0.6 | ø120x28.5 | ø105    | >80 | 120°       |



| ITEM CODE  | POWER | COL. TEMP | PF   | DIMENSION | CUT OUT | CRI | BEAM ANGLE |
|--|-------|-----------|------|-----------|---------|-----|------------|
| <b>ZOLO - 10W Slim LED Panel with inbuilt driver - Round</b> |       |           |      |           |         |     |            |
| GL91242WW  | 10W   | 3000K     | >0.9 | ø145x28.5 | ø130    | >80 | 120°       |
| GL91242NW  | 10W   | 4000K     | >0.9 | ø145x28.5 | ø130    | >80 | 120°       |
| GL91242CD  | 10W   | 6000K     | >0.9 | ø145x28.5 | ø160    | >80 | 120°       |



| ITEM CODE  | POWER | COL. TEMP | PF   | DIMENSION | CUT OUT | CRI | BEAM ANGLE |
|--|-------|-----------|------|-----------|---------|-----|------------|
| <b>ZOLO - 15W Slim LED Panel with inbuilt driver - Round</b> |       |           |      |           |         |     |            |
| GL91243WW  | 15W   | 3000K     | >0.9 | ø170x28.5 | ø150    | >80 | 120°       |
| GL91243NW  | 15W   | 4000K     | >0.9 | ø170x28.5 | ø150    | >80 | 120°       |
| GL91243CD  | 15W   | 6000K     | >0.9 | ø170x28.5 | ø150    | >80 | 120°       |



| ITEM CODE  | POWER | COL. TEMP | PF   | DIMENSION | CUT OUT | CRI | BEAM ANGLE |
|--|-------|-----------|------|-----------|---------|-----|------------|
| <b>ZOLO - 20W Slim LED Panel with inbuilt driver - Round</b> |       |           |      |           |         |     |            |
| GL91244WW  | 20W   | 3000K     | >0.9 | ø225x28.5 | ø205    | >80 | 120°       |
| GL91244NW  | 20W   | 4000K     | >0.9 | ø225x28.5 | ø205    | >80 | 120°       |
| GL91244CD  | 20W   | 6000K     | >0.9 | ø225x28.5 | ø205    | >80 | 120°       |

| ITEM CODE  | POWER | COL. TEMP | PF   | DIMENSION  | CUT OUT | CRI | BEAM ANGLE |
|--|-------|-----------|------|------------|---------|-----|------------|
| <b>ZOLO - 3W Slim LED Panel with inbuilt driver - Square</b> |       |           |      |            |         |     |            |
| GL92240WW  | 3W    | 3000K     | >0.6 | 86x86x28.5 | 75x75   | >80 | 120°       |
| GL92240NW  | 3W    | 4000K     | >0.6 | 86x86x28.5 | 75x75   | >80 | 120°       |
| GL92240CD  | 3W    | 6000K     | >0.6 | 86x86x28.5 | 75x75   | >80 | 120°       |



| ITEM CODE  | POWER | COL. TEMP | PF   | DIMENSION    | CUT OUT | CRI | BEAM ANGLE |
|--|-------|-----------|------|--------------|---------|-----|------------|
| <b>ZOLO - 6W Slim LED Panel with inbuilt driver - Square</b> |       |           |      |              |         |     |            |
| GL92241WW  | 6W    | 3000K     | >0.6 | 120x120x28.5 | 105x105 | >80 | 120°       |
| GL92241NW  | 6W    | 4000K     | >0.6 | 120x120x28.5 | 105x105 | >80 | 120°       |
| GL92241CD  | 6W    | 6000K     | >0.6 | 120x120x28.5 | 105x105 | >80 | 120°       |



| ITEM CODE   | POWER | COL. TEMP | PF   | DIMENSION    | CUT OUT | CRI | BEAM ANGLE |
|---|-------|-----------|------|--------------|---------|-----|------------|
| <b>ZOLO - 10W Slim LED Panel with inbuilt driver - Square</b> |       |           |      |              |         |     |            |
| GL92242WW   | 10W   | 3000K     | >0.9 | 145x145x28.5 | 130x130 | >80 | 120°       |
| GL92242NW   | 10W   | 4000K     | >0.9 | 145x145x28.5 | 130x130 | >80 | 120°       |
| GL92242CD   | 10W   | 6000K     | >0.9 | 145x145x28.5 | 130x130 | >80 | 120°       |



| ITEM CODE   | POWER | COL. TEMP | PF   | DIMENSION    | CUT OUT | CRI | BEAM ANGLE |
|---|-------|-----------|------|--------------|---------|-----|------------|
| <b>ZOLO - 15W Slim LED Panel with inbuilt driver - Square</b> |       |           |      |              |         |     |            |
| GL92243WW   | 15W   | 3000K     | >0.9 | 170x170x28.5 | 150x150 | >80 | 120°       |
| GL92243NW   | 15W   | 4000K     | >0.9 | 170x170x28.5 | 150x150 | >80 | 120°       |
| GL92243CD   | 15W   | 6000K     | >0.9 | 170x170x28.5 | 150x150 | >80 | 120°       |



| ITEM CODE   | POWER | COL. TEMP | PF   | DIMENSION    | CUT OUT | CRI | BEAM ANGLE |
|---|-------|-----------|------|--------------|---------|-----|------------|
| <b>ZOLO - 20W Slim LED Panel with inbuilt driver - Square</b> |       |           |      |              |         |     |            |
| GL92244WW   | 20W   | 3000K     | >0.9 | 225x225x28.5 | 205x205 | >80 | 120°       |
| GL92244NW   | 20W   | 4000K     | >0.9 | 225x225x28.5 | 205x205 | >80 | 120°       |
| GL92244CD   | 20W   | 6000K     | >0.9 | 225x225x28.5 | 205x205 | >80 | 120°       |



All dimensions are in mm



Elegance. The only  
beauty that never fades.



**G-GLITZ & SKYLITE LED DOWN LIGHT**

Crafted with precision to match high-end interiors, the G-Glitz and Skylite LED down lights are wonderful ways to illuminate spaces in residential as well as commercial premises. Their diffused optical lenses combined with high power factors ensure that they deliver flawless illumination all around while their perfectly contoured borders enable them to fit snugly and stylishly in any setting.



**G-Glitz Features**

- In-built driver
- Light, polycarbonate body
- Anti-flicker LED light
- High lumen
- High power factor

**Skylite Features**

- High bright LED downlight
- Die cast aluminium body
- Heat sink for heat management
- High lumen
- High power factor





| ITEM CODE   | POWER | COL. TEMP | PF    | DIMENSION | CUT OUT | CRI | BEAM ANGLE |
|---|-------|-----------|-------|-----------|---------|-----|------------|
| <b>G-GLITZ - 6W Slim LED Down Light with inbuilt driver - Round</b> |       |           |       |           |         |     |            |
| GL91309WW   | 6W    | 3000K     | >0.85 | ø116x36   | ø105    | >80 | 120°       |
| GL91309NW   | 6W    | 4000K     | >0.85 | ø116x36   | ø105    | >80 | 120°       |
| GL91309CD   | 6W    | 6000K     | >0.85 | ø116x36   | ø105    | >80 | 120°       |



| ITEM CODE  | POWER | COL. TEMP | PF    | DIMENSION | CUT OUT | CRI | BEAM ANGLE |
|--|-------|-----------|-------|-----------|---------|-----|------------|
| <b>G-GLITZ - 12W Slim LED Down Light with inbuilt driver - Round</b> |       |           |       |           |         |     |            |
| GL91310WW  | 12W   | 3000K     | >0.85 | ø166x36   | ø155    | >80 | 120°       |
| GL91310NW  | 12W   | 4000K     | >0.85 | ø166x36   | ø155    | >80 | 120°       |
| GL91310CD  | 12W   | 6000K     | >0.85 | ø166x36   | ø155    | >80 | 120°       |



| ITEM CODE  | POWER | COL. TEMP | PF    | DIMENSION | CUT OUT | CRI | BEAM ANGLE |
|--|-------|-----------|-------|-----------|---------|-----|------------|
| <b>G-GLITZ - 15W Slim LED Down Light with inbuilt driver - Round</b> |       |           |       |           |         |     |            |
| GL91311WW  | 15W   | 3000K     | >0.85 | ø166x36   | ø155    | >80 | 120°       |
| GL91311NW  | 15W   | 4000K     | >0.85 | ø166x36   | ø155    | >80 | 120°       |
| GL91311CD  | 15W   | 6000K     | >0.85 | ø166x36   | ø155    | >80 | 120°       |



| ITEM CODE  | POWER | COL. TEMP | PF    | DIMENSION | CUT OUT | CRI | BEAM ANGLE |
|--|-------|-----------|-------|-----------|---------|-----|------------|
| <b>G-GLITZ - 18W Slim LED Down Light with inbuilt driver - Round</b> |       |           |       |           |         |     |            |
| GL91312WW  | 18W   | 3000K     | >0.85 | ø212x36   | ø210    | >80 | 120°       |
| GL91312NW  | 18W   | 4000K     | >0.85 | ø212x36   | ø210    | >80 | 120°       |
| GL91312CD  | 18W   | 6000K     | >0.85 | ø212x36   | ø210    | >80 | 120°       |



| ITEM CODE  | POWER | COL. TEMP | PF    | DIMENSION | CUT OUT | CRI | BEAM ANGLE |
|--|-------|-----------|-------|-----------|---------|-----|------------|
| <b>G-GLITZ - 22W Slim LED Down Light with inbuilt driver - Round</b> |       |           |       |           |         |     |            |
| GL91313WW  | 22W   | 3000K     | >0.85 | ø212x36   | ø210    | >80 | 120°       |
| GL91313NW  | 22W   | 4000K     | >0.85 | ø212x36   | ø210    | >80 | 120°       |
| GL91313CD  | 22W   | 6000K     | >0.85 | ø212x36   | ø210    | >80 | 120°       |

| ITEM CODE  | POWER | COL. TEMP | PF    | DIMENSION  | CUT OUT | CRI | BEAM ANGLE |
|--|-------|-----------|-------|------------|---------|-----|------------|
| <b>G-GLITZ - 6W Slim LED Down Light with inbuilt driver - Square</b> |       |           |       |            |         |     |            |
| GL92309WW  | 6W    | 3000K     | >0.85 | 116x116x36 | 105x105 | >80 | 120°       |
| GL92309NW  | 6W    | 4000K     | >0.85 | 116x116x36 | 105x105 | >80 | 120°       |
| GL92309CD  | 6W    | 6000K     | >0.85 | 116x116x36 | 105x105 | >80 | 120°       |



| ITEM CODE   | POWER | COL. TEMP | PF    | DIMENSION  | CUT OUT | CRI | BEAM ANGLE |
|---|-------|-----------|-------|------------|---------|-----|------------|
| <b>G-GLITZ - 12W Slim LED Down Light with inbuilt driver - Square</b> |       |           |       |            |         |     |            |
| GL92310WW   | 12W   | 3000K     | >0.85 | 166x166x36 | 155x155 | >80 | 120°       |
| GL92310NW   | 12W   | 4000K     | >0.85 | 166x166x36 | 155x155 | >80 | 120°       |
| GL92310CD   | 12W   | 6000K     | >0.85 | 166x166x36 | 155x155 | >80 | 120°       |



| ITEM CODE   | POWER | COL. TEMP | PF    | DIMENSION  | CUT OUT | CRI | BEAM ANGLE |
|---|-------|-----------|-------|------------|---------|-----|------------|
| <b>G-GLITZ - 15W Slim LED Down Light with inbuilt driver - Square</b> |       |           |       |            |         |     |            |
| GL92311WW   | 15W   | 3000K     | >0.85 | 166x166x36 | 155x155 | >80 | 120°       |
| GL92311NW   | 15W   | 4000K     | >0.85 | 166x166x36 | 155x155 | >80 | 120°       |
| GL92311CD   | 15W   | 6000K     | >0.85 | 166x166x36 | 155x155 | >80 | 120°       |



| ITEM CODE   | POWER | COL. TEMP | PF    | DIMENSION  | CUT OUT | CRI | BEAM ANGLE |
|---|-------|-----------|-------|------------|---------|-----|------------|
| <b>G-GLITZ - 18W Slim LED Down Light with inbuilt driver - Square</b> |       |           |       |            |         |     |            |
| GL92312WW   | 18W   | 3000K     | >0.85 | 212x212x36 | 210x210 | >80 | 120°       |
| GL92312NW   | 18W   | 4000K     | >0.85 | 212x212x36 | 210x210 | >80 | 120°       |
| GL92312CD   | 18W   | 6000K     | >0.85 | 212x212x36 | 210x210 | >80 | 120°       |



| ITEM CODE   | POWER | COL. TEMP | PF    | DIMENSION  | CUT OUT | CRI | BEAM ANGLE |
|---|-------|-----------|-------|------------|---------|-----|------------|
| <b>G-GLITZ - 22W Slim LED Down Light with inbuilt driver - Square</b> |       |           |       |            |         |     |            |
| GL92313WW   | 22W   | 3000K     | >0.85 | 212x212x36 | 210x210 | >80 | 120°       |
| GL92313NW   | 22W   | 4000K     | >0.85 | 212x212x36 | 210x210 | >80 | 120°       |
| GL92313CD   | 22W   | 6000K     | >0.85 | 212x212x36 | 210x210 | >80 | 120°       |



All dimensions are in mm



| ITEM CODE  | POWER | COL. TEMP | PF   | DIMENSION | CUT OUT | CRI | BEAM ANGLE |
|--|-------|-----------|------|-----------|---------|-----|------------|
| <b>SKYLITE - 12W Slim LED Down Light - Round</b> |       |           |      |           |         |     |            |
| GL91302WW  | 12W   | 3000K     | >0.9 | ø118x33   | ø106    | >85 | 115°       |
| GL91302NW  | 12W   | 4000K     | >0.9 | ø118x33   | ø106    | >85 | 115°       |
| GL91302CD  | 12W   | 6000K     | >0.9 | ø118x33   | ø106    | >85 | 115°       |



| ITEM CODE  | POWER | COL. TEMP | PF   | DIMENSION | CUT OUT | CRI | BEAM ANGLE |
|--|-------|-----------|------|-----------|---------|-----|------------|
| <b>SKYLITE - 18W Slim LED Down Light - Round</b> |       |           |      |           |         |     |            |
| GL91304WW  | 18W   | 3000K     | >0.9 | ø168x33   | ø156    | >85 | 115°       |
| GL91304NW  | 18W   | 4000K     | >0.9 | ø168x33   | ø156    | >85 | 115°       |
| GL91304CD  | 18W   | 6000K     | >0.9 | ø168x33   | ø156    | >85 | 115°       |



| ITEM CODE  | POWER | COL. TEMP | PF   | DIMENSION | CUT OUT | CRI | BEAM ANGLE |
|--|-------|-----------|------|-----------|---------|-----|------------|
| <b>SKYLITE - 24W Slim LED Down Light - Round</b> |       |           |      |           |         |     |            |
| GL91305WW  | 24W   | 3000K     | >0.9 | ø220x33   | ø208    | >85 | 115°       |
| GL91305NW  | 24W   | 4000K     | >0.9 | ø220x33   | ø208    | >85 | 115°       |
| GL91305CD  | 24W   | 6000K     | >0.9 | ø220x33   | ø208    | >85 | 115°       |



| ITEM CODE   | POWER | COL. TEMP | PF   | DIMENSION  | CUT OUT | CRI | BEAM ANGLE |
|---|-------|-----------|------|------------|---------|-----|------------|
| <b>SKYLITE - 12W Slim LED Down Light - Square</b> |       |           |      |            |         |     |            |
| GL92302WW   | 12W   | 3000K     | >0.9 | 118x118x33 | 106x106 | >85 | 115°       |
| GL92302NW   | 12W   | 4000K     | >0.9 | 118x118x33 | 106x106 | >85 | 115°       |
| GL92302CD   | 12W   | 6000K     | >0.9 | 118x118x33 | 106x106 | >85 | 115°       |



| ITEM CODE   | POWER | COL. TEMP | PF   | DIMENSION  | CUT OUT | CRI | BEAM ANGLE |
|---|-------|-----------|------|------------|---------|-----|------------|
| <b>SKYLITE - 18W Slim LED Down Light - Square</b> |       |           |      |            |         |     |            |
| GL92304WW   | 18W   | 3000K     | >0.9 | 168x168x33 | 156x156 | >85 | 115°       |
| GL92304NW   | 18W   | 4000K     | >0.9 | 168x168x33 | 156x156 | >85 | 115°       |
| GL92304CD   | 18W   | 6000K     | >0.9 | 168x168x33 | 156x156 | >85 | 115°       |

| ITEM CODE   | POWER | COL. TEMP | PF   | DIMENSION  | CUT OUT | CRI | BEAM ANGLE |
|---|-------|-----------|------|------------|---------|-----|------------|
| <b>SKYLITE - 24W Slim LED Down Light - Square</b> |       |           |      |            |         |     |            |
| GL92305WW   | 24W   | 3000K     | >0.9 | 220x220x33 | 208x208 | >85 | 115°       |
| GL92305NW   | 24W   | 4000K     | >0.9 | 220x220x33 | 208x208 | >85 | 115°       |
| GL92305CD   | 24W   | 6000K     | >0.9 | 220x220x33 | 208x208 | >85 | 115°       |



**skylite**  
LED DOWN LIGHT

All dimensions are in mm



Illumination that goes on and on. And on.

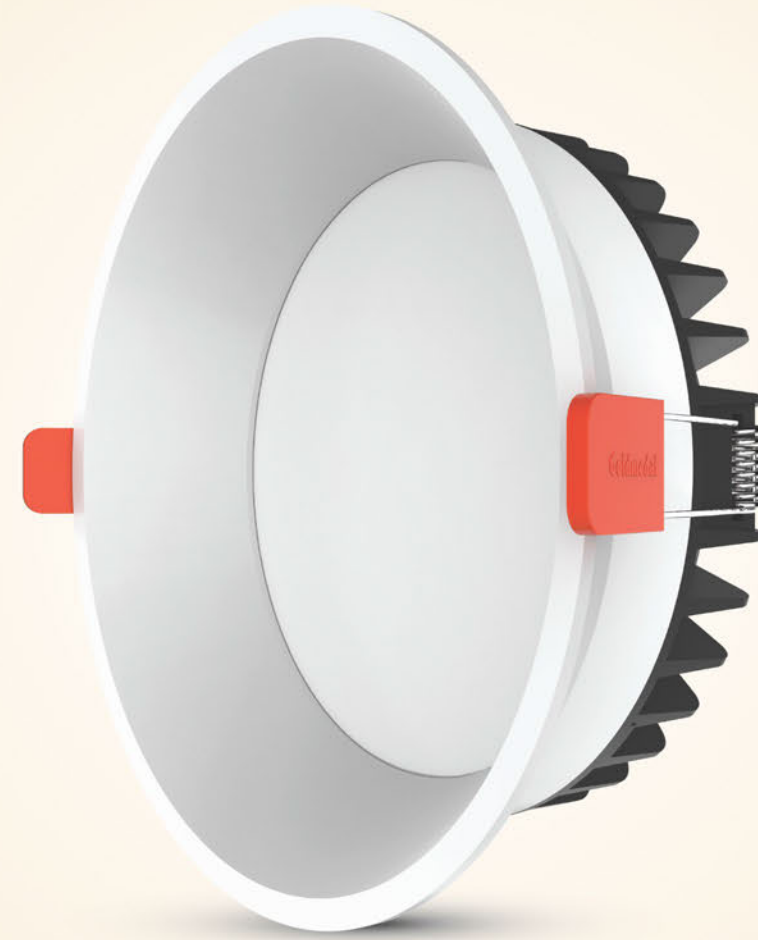


**Apollo**  
LED DOWN LIGHT

- Features
- Recessed LED down light • Die cast aluminium body
  - High grade, anti-glare diffuser • Surge protection
  - High lumen • High power factor

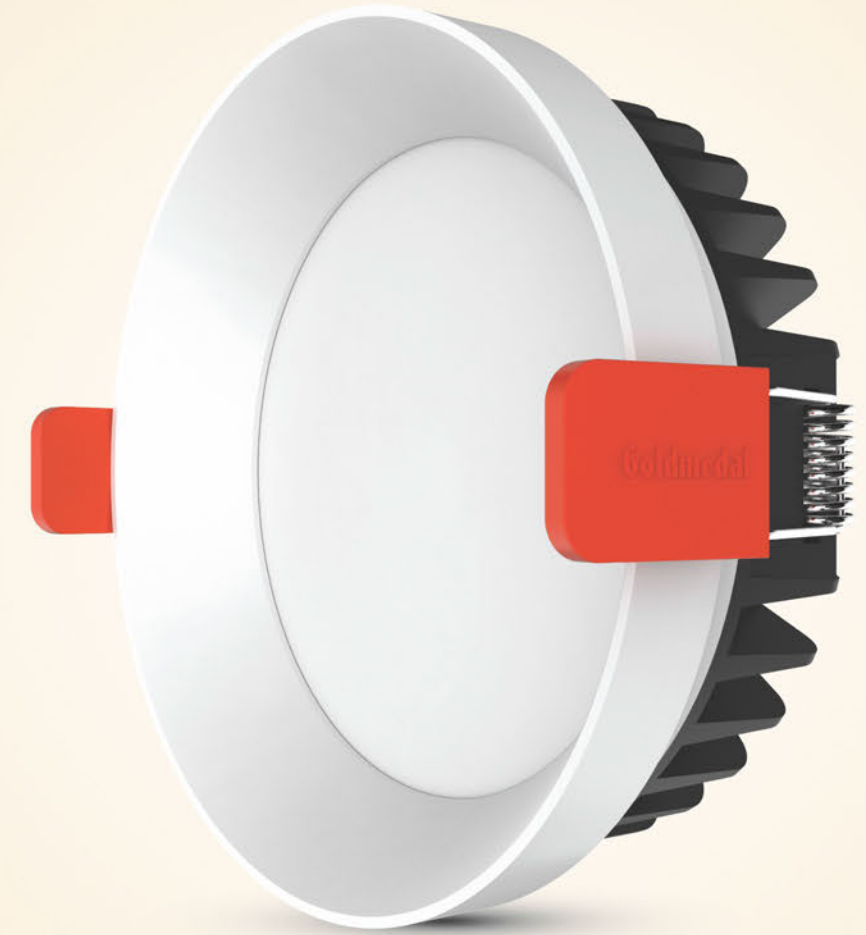
**APOLLO & APOLLO+ LED DOWN LIGHT**

The Apollo and Apollo+ LED down lights, with their high grade, anti-glare diffusers, offer delightful color consistency and glare-free lighting in any setting. Delivering a higher quality of light, these down lights are ideal solutions for both residential and commercial use. Easy to install and available in both round and square shapes, the Apollo and Apollo+ not only maximizes your energy savings but also the elegance of your interiors.



**Apollo+**  
LED DOWN LIGHT

- Features
- Rimless, recessed LED down light • Die cast aluminium body
  - High grade, anti-glare diffuser • Surge protection
  - High lumen output • High power factor





| ITEM CODE | POWER | COL. TEMP | PF | DIMENSION | CUT OUT | CRI | BEAM ANGLE |
|-----------|-------|-----------|----|-----------|---------|-----|------------|
|-----------|-------|-----------|----|-----------|---------|-----|------------|

**APOLLO - 10W LED Down Light - Round**

|           |     |       |       |         |      |     |      |
|-----------|-----|-------|-------|---------|------|-----|------|
| GL91318WW | 10W | 3000K | >0.95 | ø120x50 | ø112 | >80 | 120° |
| GL91318NW | 10W | 4000K | >0.95 | ø120x50 | ø112 | >80 | 120° |
| GL91318CD | 10W | 6000K | >0.95 | ø120x50 | ø112 | >80 | 120° |

**APOLLO - 15W LED Down Light - Round**

|           |     |       |       |         |      |     |      |
|-----------|-----|-------|-------|---------|------|-----|------|
| GL91319WW | 15W | 3000K | >0.95 | ø154x54 | ø146 | >80 | 120° |
| GL91319NW | 15W | 4000K | >0.95 | ø154x54 | ø146 | >80 | 120° |
| GL91319CD | 15W | 6000K | >0.95 | ø154x54 | ø146 | >80 | 120° |

**APOLLO - 20W LED Down Light - Round**

|           |     |       |       |         |      |     |      |
|-----------|-----|-------|-------|---------|------|-----|------|
| GL91320WW | 20W | 3000K | >0.95 | ø175x54 | ø167 | >80 | 120° |
| GL91320NW | 20W | 4000K | >0.95 | ø175x54 | ø167 | >80 | 120° |
| GL91320CD | 20W | 6000K | >0.95 | ø175x54 | ø167 | >80 | 120° |

**APOLLO - 10W LED Down Light - Square**

|           |     |       |       |            |         |     |      |
|-----------|-----|-------|-------|------------|---------|-----|------|
| GL92318WW | 10W | 3000K | >0.95 | 110x110x50 | 100x100 | >80 | 120° |
| GL92318NW | 10W | 4000K | >0.95 | 110x110x50 | 100x100 | >80 | 120° |
| GL92318CD | 10W | 6000K | >0.95 | 110x110x50 | 100x100 | >80 | 120° |

**APOLLO - 15W LED Down Light - Square**

|           |     |       |       |            |         |     |      |
|-----------|-----|-------|-------|------------|---------|-----|------|
| GL92319WW | 15W | 3000K | >0.95 | 145x145x53 | 137x137 | >80 | 120° |
| GL92319NW | 15W | 4000K | >0.95 | 145x145x53 | 137x137 | >80 | 120° |
| GL92319CD | 15W | 6000K | >0.95 | 145x145x53 | 137x137 | >80 | 120° |

**APOLLO - 20W LED Down Light - Square**

|           |     |       |       |            |         |     |      |
|-----------|-----|-------|-------|------------|---------|-----|------|
| GL92320WW | 20W | 3000K | >0.95 | 170x170x54 | 160x160 | >80 | 120° |
| GL92320NW | 20W | 4000K | >0.95 | 170x170x54 | 160x160 | >80 | 120° |
| GL92320CD | 20W | 6000K | >0.95 | 170x170x54 | 160x160 | >80 | 120° |

All dimensions are in mm

| ITEM CODE | POWER | COL. TEMP | PF | DIMENSION | CUT OUT | CRI | BEAM ANGLE |
|-----------|-------|-----------|----|-----------|---------|-----|------------|
|-----------|-------|-----------|----|-----------|---------|-----|------------|

**APOLLO+ - 10W Rimless LED Down Light - Round**

|           |     |       |       |         |     |     |      |
|-----------|-----|-------|-------|---------|-----|-----|------|
| GL91326WW | 10W | 3000K | >0.95 | ø105x40 | ø97 | >80 | 120° |
| GL91326NW | 10W | 4000K | >0.95 | ø105x40 | ø97 | >80 | 120° |
| GL91326CD | 10W | 6000K | >0.95 | ø105x40 | ø97 | >80 | 120° |

**APOLLO+ - 15W Rimless LED Down Light - Round**

|           |     |       |       |         |      |     |      |
|-----------|-----|-------|-------|---------|------|-----|------|
| GL91327WW | 15W | 3000K | >0.95 | ø137x40 | ø128 | >80 | 120° |
| GL91327NW | 15W | 4000K | >0.95 | ø137x40 | ø128 | >80 | 120° |
| GL91327CD | 15W | 6000K | >0.95 | ø137x40 | ø128 | >80 | 120° |

**APOLLO+ - 20W Rimless LED Down Light - Round**

|           |     |       |       |         |      |     |      |
|-----------|-----|-------|-------|---------|------|-----|------|
| GL91328WW | 20W | 3000K | >0.95 | ø158x40 | ø150 | >80 | 120° |
| GL91328NW | 20W | 4000K | >0.95 | ø158x40 | ø150 | >80 | 120° |
| GL91328CD | 20W | 6000K | >0.95 | ø158x40 | ø150 | >80 | 120° |

**APOLLO+ - 10W Rimless LED Down Light - Square**

|           |     |       |       |          |       |     |      |
|-----------|-----|-------|-------|----------|-------|-----|------|
| GL92326WW | 10W | 3000K | >0.95 | 97x97x40 | 87x87 | >80 | 120° |
| GL92326NW | 10W | 4000K | >0.95 | 97x97x40 | 87x87 | >80 | 120° |
| GL92326CD | 10W | 6000K | >0.95 | 97x97x40 | 87x87 | >80 | 120° |

**APOLLO+ - 15W Rimless LED Down Light - Square**

|           |     |       |       |            |         |     |      |
|-----------|-----|-------|-------|------------|---------|-----|------|
| GL92327WW | 15W | 3000K | >0.95 | 131x131x40 | 120x120 | >80 | 120° |
| GL92327NW | 15W | 4000K | >0.95 | 131x131x40 | 120x120 | >80 | 120° |
| GL92327CD | 15W | 6000K | >0.95 | 131x131x40 | 120x120 | >80 | 120° |

**APOLLO+ - 20W Rimless LED Down Light - Square**

|           |     |       |       |            |         |     |      |
|-----------|-----|-------|-------|------------|---------|-----|------|
| GL92328WW | 20W | 3000K | >0.95 | 152x152x40 | 140x140 | >80 | 120° |
| GL92328NW | 20W | 4000K | >0.95 | 152x152x40 | 140x140 | >80 | 120° |
| GL92328CD | 20W | 6000K | >0.95 | 152x152x40 | 140x140 | >80 | 120° |



Makes everything look  
brighter & beautiful.



**TESLA**  
SLIM DOWN LIGHT

**TESLA LED DOWN LIGHT**

The Tesla is a slim down light that makes everything around look brighter and beautiful. Engineered to deliver exceptional colour rendering, the Tesla, with its high power factor produces superior light distribution which is a delight to the senses. Available in round and square shapes, these flawlessly crafted down lights are aesthetically and functionally delightful in every way.

**Features**

- Slim, elegant LED down light
- Die cast aluminium body
- High grade powder coating
- High lumen output
- High power factor



| ITEM CODE                                     | POWER | COL. TEMP | PF   | DIMENSION | CUT OUT | CRI | BEAM ANGLE |
|---|-------|-----------|------|-----------|---------|-----|------------|
| <b>TESLA - 8W Slim LED Down Light - Round</b> |       |           |      |           |         |     |            |
| GL91249WW                                     | 8W    | 3000K     | >0.9 | ø120x27   | ø109    | >80 | 110°       |
| GL91249NW                                     | 8W    | 4000K     | >0.9 | ø120x27   | ø109    | >80 | 110°       |
| GL91249CD                                     | 8W    | 6000K     | >0.9 | ø120x27   | ø109    | >80 | 110°       |



| ITEM CODE                                      | POWER | COL. TEMP | PF   | DIMENSION | CUT OUT | CRI | BEAM ANGLE |
|--|-------|-----------|------|-----------|---------|-----|------------|
| <b>TESLA - 15W Slim LED Down Light - Round</b> |       |           |      |           |         |     |            |
| GL91251WW                                      | 15W   | 3000K     | >0.9 | ø172x27   | ø159    | >80 | 110°       |
| GL91251NW                                      | 15W   | 4000K     | >0.9 | ø172x27   | ø159    | >80 | 110°       |
| GL91251CD                                      | 15W   | 6000K     | >0.9 | ø172x27   | ø159    | >80 | 110°       |



| ITEM CODE                                      | POWER | COL. TEMP | PF   | DIMENSION | CUT OUT | CRI | BEAM ANGLE |
|--|-------|-----------|------|-----------|---------|-----|------------|
| <b>TESLA - 22W Slim LED Down Light - Round</b> |       |           |      |           |         |     |            |
| GL91253WW                                      | 22W   | 3000K     | >0.9 | ø227x27   | ø214    | >80 | 110°       |
| GL91253NW                                      | 22W   | 4000K     | >0.9 | ø227x27   | ø214    | >80 | 110°       |
| GL91253CD                                      | 22W   | 6000K     | >0.9 | ø227x27   | ø214    | >80 | 110°       |



| ITEM CODE                                      | POWER | COL. TEMP | PF   | DIMENSION  | CUT OUT | CRI | BEAM ANGLE |
|--|-------|-----------|------|------------|---------|-----|------------|
| <b>TESLA - 8W Slim LED Down Light - Square</b> |       |           |      |            |         |     |            |
| GL92249WW                                      | 8W    | 3000K     | >0.9 | 120x120x27 | 109x109 | >80 | 110°       |
| GL92249NW                                      | 8W    | 4000K     | >0.9 | 120x120x27 | 109x109 | >80 | 110°       |
| GL92249CD                                      | 8W    | 6000K     | >0.9 | 120x120x27 | 109x109 | >80 | 110°       |



| ITEM CODE                                       | POWER | COL. TEMP | PF   | DIMENSION  | CUT OUT | CRI | BEAM ANGLE |
|---|-------|-----------|------|------------|---------|-----|------------|
| <b>TESLA - 15W Slim LED Down Light - Square</b> |       |           |      |            |         |     |            |
| GL92251WW                                       | 15W   | 3000K     | >0.9 | 172x172x27 | 159x159 | >80 | 110°       |
| GL92251NW                                       | 15W   | 4000K     | >0.9 | 172x172x27 | 159x159 | >80 | 110°       |
| GL92251CD                                       | 15W   | 6000K     | >0.9 | 172x172x27 | 159x159 | >80 | 110°       |

| ITEM CODE                                       | POWER | COL. TEMP | PF   | DIMENSION  | CUT OUT | CRI | BEAM ANGLE |
|---|-------|-----------|------|------------|---------|-----|------------|
| <b>TESLA - 22W Slim LED Down Light - Square</b> |       |           |      |            |         |     |            |
| GL92253WW                                       | 22W   | 3000K     | >0.9 | 227x227x27 | 214x214 | >80 | 110°       |
| GL92253NW                                       | 22W   | 4000K     | >0.9 | 227x227x27 | 214x214 | >80 | 110°       |
| GL92253CD                                       | 22W   | 6000K     | >0.9 | 227x227x27 | 214x214 | >80 | 110°       |



**TESLA**  
SLIM DOWN LIGHT

All dimensions are in mm



The magic of light.  
The wonder of LED.



## SURFACE PANEL *LIGHT*



### **SOLITAIRE** SURFACE LED LIGHT

#### **SOLITAIRE SURFACE LED LIGHT**

Mounted on a classic frame, a Solitaire LED Panel is pure elegance in its simplicity. A surface panel, the Solitaire is a modular LED panel that can be fixed directly on walls or ceilings with minimum effort. The panels are designed to keep fasteners, drivers and other fixtures away from sight to ensure a pleasant, aesthetic appearance. Crafted with precision, the Solitaire is a wonderful way to illuminate residential as well as commercial spaces.

#### Features

- Modular surface light
- Sleek, screw-less fitting
- Die cast aluminium body
- High grade powder coating
- High grade diffuser



| ITEM CODE  | POWER | COL. TEMP | PF   | DIMENSION | CUT OUT | CRI | BEAM ANGLE |
|--|-------|-----------|------|-----------|---------|-----|------------|
| <b>SOLITAIRE - 6W Slim LED Surface Light - Round</b> |       |           |      |           |         |     |            |
| GL91401WW  | 6W    | 3000K     | >0.9 | ø92x23    | NA      | >85 | 120°       |
| GL91401NW  | 6W    | 4000K     | >0.9 | ø92x23    | NA      | >85 | 120°       |
| GL91401CD  | 6W    | 6000K     | >0.9 | ø92x23    | NA      | >85 | 120°       |



| ITEM CODE   | POWER | COL. TEMP | PF   | DIMENSION | CUT OUT | CRI | BEAM ANGLE |
|---|-------|-----------|------|-----------|---------|-----|------------|
| <b>SOLITAIRE - 12W Slim LED Surface Light - Round</b> |       |           |      |           |         |     |            |
| GL91402WW   | 12W   | 3000K     | >0.9 | ø140x23   | NA      | >85 | 120°       |
| GL91402NW   | 12W   | 4000K     | >0.9 | ø140x23   | NA      | >85 | 120°       |
| GL91402CD   | 12W   | 6000K     | >0.9 | ø140x23   | NA      | >85 | 120°       |



| ITEM CODE   | POWER | COL. TEMP | PF   | DIMENSION | CUT OUT | CRI | BEAM ANGLE |
|---|-------|-----------|------|-----------|---------|-----|------------|
| <b>SOLITAIRE - 18W Slim LED Surface Light - Round</b> |       |           |      |           |         |     |            |
| GL91404WW   | 18W   | 3000K     | >0.9 | ø192x23   | NA      | >85 | 120°       |
| GL91404NW   | 18W   | 4000K     | >0.9 | ø192x23   | NA      | >85 | 120°       |
| GL91404CD   | 18W   | 6000K     | >0.9 | ø192x23   | NA      | >85 | 120°       |



| ITEM CODE   | POWER | COL. TEMP | PF   | DIMENSION | CUT OUT | CRI | BEAM ANGLE |
|---|-------|-----------|------|-----------|---------|-----|------------|
| <b>SOLITAIRE - 6W Slim LED Surface Light - Square</b> |       |           |      |           |         |     |            |
| GL92401WW   | 6W    | 3000K     | >0.9 | 92x92x23  | NA      | >85 | 120°       |
| GL92401NW   | 6W    | 4000K     | >0.9 | 92x92x23  | NA      | >85 | 120°       |
| GL92401CD   | 6W    | 6000K     | >0.9 | 92x92x23  | NA      | >85 | 120°       |



| ITEM CODE  | POWER | COL. TEMP | PF   | DIMENSION  | CUT OUT | CRI | BEAM ANGLE |
|--|-------|-----------|------|------------|---------|-----|------------|
| <b>SOLITAIRE - 12W Slim LED Surface Light - Square</b> |       |           |      |            |         |     |            |
| GL92402WW  | 12W   | 3000K     | >0.9 | 140x140x23 | NA      | >85 | 120°       |
| GL92402NW  | 12W   | 4000K     | >0.9 | 140x140x23 | NA      | >85 | 120°       |
| GL92402CD  | 12W   | 6000K     | >0.9 | 140x140x23 | NA      | >85 | 120°       |

All dimensions are in mm

| ITEM CODE  | POWER | COL. TEMP | PF   | DIMENSION  | CUT OUT | CRI | BEAM ANGLE |
|--|-------|-----------|------|------------|---------|-----|------------|
| <b>SOLITAIRE - 18W Slim LED Surface Light - Square</b> |       |           |      |            |         |     |            |
| GL92404WW  | 18W   | 3000K     | >0.9 | 192x192x23 | NA      | >85 | 120°       |
| GL92404NW  | 18W   | 4000K     | >0.9 | 192x192x23 | NA      | >85 | 120°       |
| GL92404CD  | 18W   | 6000K     | >0.9 | 192x192x23 | NA      | >85 | 120°       |



**SOLITAIRE**  
SURFACE LED LIGHT





EASY TO FIX. *BRILLIANT* TO USE.



**Xylo**  
SURFACE LIGHT

**XYLO SURFACE LED LIGHT**

A gentle twist and the Xylo easily latches on to the ceiling, ready to illuminate its surroundings with a light that is pleasant and cool. A surface panel, the Xylo is a modular LED light that can be fixed directly on a wall or ceiling with minimum effort. With no fasteners, drivers or other visible fixtures, these LEDs are extremely elegant in appearance.

| ITEM CODE | POWER | COL. TEMP | PF | DIMENSION | CUT OUT | CRI | BEAM ANGLE |
|-----------|-------|-----------|----|-----------|---------|-----|------------|
|-----------|-------|-----------|----|-----------|---------|-----|------------|

**XYLO - 7W Slim LED Surface Light - Round**

|           |    |       |      |       |    |     |      |
|-----------|----|-------|------|-------|----|-----|------|
| GL91409WW | 7W | 3000K | >0.9 | 85x47 | NA | >85 | 120° |
| GL91409NW | 7W | 4000K | >0.9 | 85x47 | NA | >85 | 120° |
| GL91409CD | 7W | 6000K | >0.9 | 85x47 | NA | >85 | 120° |

**XYLO - 9W Slim LED Surface Light - Round**

|           |    |       |      |        |    |     |      |
|-----------|----|-------|------|--------|----|-----|------|
| GL91410WW | 9W | 3000K | >0.9 | 110x47 | NA | >85 | 120° |
| GL91410NW | 9W | 4000K | >0.9 | 110x47 | NA | >85 | 120° |
| GL91410CD | 9W | 6000K | >0.9 | 110x47 | NA | >85 | 120° |

**XYLO - 12W Slim LED Surface Light - Round**

|           |     |       |      |        |    |     |      |
|-----------|-----|-------|------|--------|----|-----|------|
| GL91411WW | 12W | 3000K | >0.9 | 135x47 | NA | >85 | 120° |
| GL91411NW | 12W | 4000K | >0.9 | 135x47 | NA | >85 | 120° |
| GL91411CD | 12W | 6000K | >0.9 | 135x47 | NA | >85 | 120° |

**XYLO - 12W Slim LED Surface Light with PIR - Round**

|           |     |       |      |        |    |     |      |
|-----------|-----|-------|------|--------|----|-----|------|
| GL91412WW | 12W | 3000K | >0.9 | 135x47 | NA | >85 | 120° |
| GL91412NW | 12W | 4000K | >0.9 | 135x47 | NA | >85 | 120° |
| GL91412CD | 12W | 6000K | >0.9 | 135x47 | NA | >85 | 120° |



**Features**

- Modular surface light • Sleek, screw-less fitting
- Can be fixed directly on wall/ceiling • Detachable LED module
- High grade diffuser





Power to illuminate.  
Passion to innovate.



**G-MAX & G-MAX+ LED COB DOWN LIGHT**

Focus the G-Max using its swivel mechanism and the down light directs an even flow of light towards the object of attention. The reflectors in these lights ensures very high light output and consistent distribution of light. The G-Max is constructed using high grade aluminum die-cast with superior powder coating for that sleek and sophisticated look.

**G-max**

- Features
- High bright COB down light
  - Heat sink for heat management
  - Die cast aluminium body
  - High grade powder coating
  - High lumen output



**COB DOWN LIGHT**

**G-max+**

- Features
- Can be recess or flush mounted
  - High bright COB down light
  - Swivel mechanism to focus light
  - Heat sink for heat management
  - Die cast aluminium body
  - High grade powder coating
  - High lumen output





# COB DOWN LIGHT



| ITEM CODE                                    | POWER | COL. TEMP | PF   | DIMENSION | CUT OUT | CRI | BEAM ANGLE |
|--|-------|-----------|------|-----------|---------|-----|------------|
| <b>G-MAX - 3W LED COB Down Light - Round</b> |       |           |      |           |         |     |            |
| GL91648WW                                    | 3W    | 3000K     | >0.5 | ø65x29    | ø55     | >80 | 120°       |
| GL91648NW                                    | 3W    | 4000K     | >0.5 | ø65x29    | ø55     | >80 | 120°       |
| GL91648CD                                    | 3W    | 6000K     | >0.5 | ø65x29    | ø55     | >80 | 120°       |

| ITEM CODE                                    | POWER | COL. TEMP | PF   | DIMENSION | CUT OUT | CRI | BEAM ANGLE |
|--|-------|-----------|------|-----------|---------|-----|------------|
| <b>G-MAX - 6W LED COB Down Light - Round</b> |       |           |      |           |         |     |            |
| GL91649WW                                    | 6W    | 3000K     | >0.5 | ø85x29    | ø75     | >80 | 120°       |
| GL91649NW                                    | 6W    | 4000K     | >0.5 | ø85x29    | ø75     | >80 | 120°       |
| GL91649CD                                    | 6W    | 6000K     | >0.5 | ø85x29    | ø75     | >80 | 120°       |

| ITEM CODE                                     | POWER | COL. TEMP | PF   | DIMENSION | CUT OUT | CRI | BEAM ANGLE |
|---|-------|-----------|------|-----------|---------|-----|------------|
| <b>G-MAX - 12W LED COB Down Light - Round</b> |       |           |      |           |         |     |            |
| GL91650WW                                     | 12W   | 3000K     | >0.9 | ø105x29   | ø95     | >80 | 120°       |
| GL91650NW                                     | 12W   | 4000K     | >0.9 | ø105x29   | ø95     | >80 | 120°       |
| GL91650CD                                     | 12W   | 6000K     | >0.9 | ø105x29   | ø95     | >80 | 120°       |

| ITEM CODE                                     | POWER | COL. TEMP | PF   | DIMENSION | CUT OUT | CRI | BEAM ANGLE |
|---|-------|-----------|------|-----------|---------|-----|------------|
| <b>G-MAX - 18W LED COB Down Light - Round</b> |       |           |      |           |         |     |            |
| GL91652WW                                     | 18W   | 3000K     | >0.9 | ø115x38   | ø105    | >80 | 120°       |
| GL91652NW                                     | 18W   | 4000K     | >0.9 | ø115x38   | ø105    | >80 | 120°       |
| GL91652CD                                     | 18W   | 6000K     | >0.9 | ø115x38   | ø105    | >80 | 120°       |

| ITEM CODE                                     | POWER | COL. TEMP | PF   | DIMENSION | CUT OUT | CRI | BEAM ANGLE |
|---|-------|-----------|------|-----------|---------|-----|------------|
| <b>G-MAX - 22W LED COB Down Light - Round</b> |       |           |      |           |         |     |            |
| GL91653WW                                     | 22W   | 3000K     | >0.9 | ø135x38   | ø125    | >80 | 120°       |
| GL91653NW                                     | 22W   | 4000K     | >0.9 | ø135x38   | ø125    | >80 | 120°       |
| GL91653CD                                     | 22W   | 6000K     | >0.9 | ø135x38   | ø125    | >80 | 120°       |

| ITEM CODE                                     | POWER | COL. TEMP | PF   | DIMENSION | CUT OUT | CRI | BEAM ANGLE |
|---|-------|-----------|------|-----------|---------|-----|------------|
| <b>G-MAX - 3W LED COB Down Light - Square</b> |       |           |      |           |         |     |            |
| GL92648WW                                     | 3W    | 3000K     | >0.5 | 65x65x29  | ø55     | >80 | 120°       |
| GL92648NW                                     | 3W    | 4000K     | >0.5 | 65x65x29  | ø55     | >80 | 120°       |
| GL92648CD                                     | 3W    | 6000K     | >0.5 | 65x65x29  | ø55     | >80 | 120°       |

| ITEM CODE                                     | POWER | COL. TEMP | PF   | DIMENSION | CUT OUT | CRI | BEAM ANGLE |
|---|-------|-----------|------|-----------|---------|-----|------------|
| <b>G-MAX - 6W LED COB Down Light - Square</b> |       |           |      |           |         |     |            |
| GL92649WW                                     | 6W    | 3000K     | >0.5 | 85x85x29  | ø75     | >80 | 120°       |
| GL92649NW                                     | 6W    | 4000K     | >0.5 | 85x85x29  | ø75     | >80 | 120°       |
| GL92649CD                                     | 6W    | 6000K     | >0.5 | 85x85x29  | ø75     | >80 | 120°       |

| ITEM CODE                                      | POWER | COL. TEMP | PF   | DIMENSION  | CUT OUT | CRI | BEAM ANGLE |
|--|-------|-----------|------|------------|---------|-----|------------|
| <b>G-MAX - 12W LED COB Down Light - Square</b> |       |           |      |            |         |     |            |
| GL92650WW                                      | 12W   | 3000K     | >0.9 | 105x105x29 | ø95     | >80 | 120°       |
| GL92650NW                                      | 12W   | 4000K     | >0.9 | 105x105x29 | ø95     | >80 | 120°       |
| GL92650CD                                      | 12W   | 6000K     | >0.9 | 105x105x29 | ø95     | >80 | 120°       |

| ITEM CODE                                      | POWER | COL. TEMP | PF   | DIMENSION  | CUT OUT | CRI | BEAM ANGLE |
|--|-------|-----------|------|------------|---------|-----|------------|
| <b>G-MAX - 18W LED COB Down Light - Square</b> |       |           |      |            |         |     |            |
| GL92652WW                                      | 18W   | 3000K     | >0.9 | 115x115x38 | ø105    | >80 | 120°       |
| GL92652NW                                      | 18W   | 4000K     | >0.9 | 115x115x38 | ø105    | >80 | 120°       |
| GL92652CD                                      | 18W   | 6000K     | >0.9 | 115x115x38 | ø105    | >80 | 120°       |

| ITEM CODE                                      | POWER | COL. TEMP | PF   | DIMENSION  | CUT OUT | CRI | BEAM ANGLE |
|--|-------|-----------|------|------------|---------|-----|------------|
| <b>G-MAX - 22W LED COB Down Light - Square</b> |       |           |      |            |         |     |            |
| GL92653WW                                      | 22W   | 3000K     | >0.9 | 135x135x38 | ø125    | >80 | 120°       |
| GL92653NW                                      | 22W   | 4000K     | >0.9 | 135x135x38 | ø125    | >80 | 120°       |
| GL92653CD                                      | 22W   | 6000K     | >0.9 | 135x135x38 | ø125    | >80 | 120°       |





| ITEM CODE  | POWER | COL. TEMP | PF   | DIMENSION | CUT OUT | CRI | BEAM ANGLE |
|--|-------|-----------|------|-----------|---------|-----|------------|
| <b>G-MAX+ - 3W Tiltable LED COB Down Light - Round</b> |       |           |      |           |         |     |            |
| GL91691WW  | 3W    | 3000K     | >0.5 | ø65x29    | ø55     | >80 | 120°       |
| GL91691NW  | 3W    | 4000K     | >0.5 | ø65x29    | ø55     | >80 | 120°       |
| GL91691CD  | 3W    | 6000K     | >0.5 | ø65x29    | ø55     | >80 | 120°       |



| ITEM CODE  | POWER | COL. TEMP | PF   | DIMENSION | CUT OUT | CRI | BEAM ANGLE |
|--|-------|-----------|------|-----------|---------|-----|------------|
| <b>G-MAX+ - 6W Tiltable LED COB Down Light - Round</b> |       |           |      |           |         |     |            |
| GL91692WW  | 6W    | 3000K     | >0.5 | ø85x29    | ø75     | >80 | 120°       |
| GL91692NW  | 6W    | 4000K     | >0.5 | ø85x29    | ø75     | >80 | 120°       |
| GL91692CD  | 6W    | 6000K     | >0.5 | ø85x29    | ø75     | >80 | 120°       |



| ITEM CODE   | POWER | COL. TEMP | PF   | DIMENSION | CUT OUT | CRI | BEAM ANGLE |
|---|-------|-----------|------|-----------|---------|-----|------------|
| <b>G-MAX+ - 12W Tiltable LED COB Down Light - Round</b> |       |           |      |           |         |     |            |
| GL91693WW   | 12W   | 3000K     | >0.9 | ø105x29   | ø95     | >80 | 120°       |
| GL91693NW   | 12W   | 4000K     | >0.9 | ø105x29   | ø95     | >80 | 120°       |
| GL91693CD   | 12W   | 6000K     | >0.9 | ø105x29   | ø95     | >80 | 120°       |



| ITEM CODE   | POWER | COL. TEMP | PF   | DIMENSION | CUT OUT | CRI | BEAM ANGLE |
|---|-------|-----------|------|-----------|---------|-----|------------|
| <b>G-MAX+ - 18W Tiltable LED COB Down Light - Round</b> |       |           |      |           |         |     |            |
| GL91695WW   | 18W   | 3000K     | >0.9 | ø115x38   | ø105    | >80 | 120°       |
| GL91695NW   | 18W   | 4000K     | >0.9 | ø115x38   | ø105    | >80 | 120°       |
| GL91695CD   | 18W   | 6000K     | >0.9 | ø115x38   | ø105    | >80 | 120°       |



| ITEM CODE   | POWER | COL. TEMP | PF   | DIMENSION | CUT OUT | CRI | BEAM ANGLE |
|---|-------|-----------|------|-----------|---------|-----|------------|
| <b>G-MAX+ - 22W Tiltable LED COB Down Light - Round</b> |       |           |      |           |         |     |            |
| GL91696WW   | 22W   | 3000K     | >0.9 | ø135x38   | ø125    | >80 | 120°       |
| GL91696NW   | 22W   | 4000K     | >0.9 | ø135x38   | ø125    | >80 | 120°       |
| GL91696CD   | 22W   | 6000K     | >0.9 | ø135x38   | ø125    | >80 | 120°       |



| ITEM CODE   | POWER | COL. TEMP | PF   | DIMENSION | CUT OUT | CRI | BEAM ANGLE |
|---|-------|-----------|------|-----------|---------|-----|------------|
| <b>G-MAX+ - 3W Tiltable LED COB Down Light - Square</b> |       |           |      |           |         |     |            |
| GL92691WW   | 3W    | 3000K     | >0.5 | 65x65x29  | ø55     | >80 | 120°       |
| GL92691NW   | 3W    | 4000K     | >0.5 | 65x65x29  | ø55     | >80 | 120°       |
| GL92691CD   | 3W    | 6000K     | >0.5 | 65x65x29  | ø55     | >80 | 120°       |



| ITEM CODE   | POWER | COL. TEMP | PF   | DIMENSION | CUT OUT | CRI | BEAM ANGLE |
|---|-------|-----------|------|-----------|---------|-----|------------|
| <b>G-MAX+ - 6W Tiltable LED COB Down Light - Square</b> |       |           |      |           |         |     |            |
| GL92692WW   | 6W    | 3000K     | >0.5 | 85x85x29  | ø75     | >80 | 120°       |
| GL92692NW   | 6W    | 4000K     | >0.5 | 85x85x29  | ø75     | >80 | 120°       |
| GL92692CD   | 6W    | 6000K     | >0.5 | 85x85x29  | ø75     | >80 | 120°       |



| ITEM CODE  | POWER | COL. TEMP | PF   | DIMENSION  | CUT OUT | CRI | BEAM ANGLE |
|--|-------|-----------|------|------------|---------|-----|------------|
| <b>G-MAX+ - 12W Tiltable LED COB Down Light - Square</b> |       |           |      |            |         |     |            |
| GL92693WW  | 12W   | 3000K     | >0.9 | 105x105x29 | ø95     | >80 | 120°       |
| GL92693NW  | 12W   | 4000K     | >0.9 | 105x105x29 | ø95     | >80 | 120°       |
| GL92693CD  | 12W   | 6000K     | >0.9 | 105x105x29 | ø95     | >80 | 120°       |



| ITEM CODE  | POWER | COL. TEMP | PF   | DIMENSION  | CUT OUT | CRI | BEAM ANGLE |
|--|-------|-----------|------|------------|---------|-----|------------|
| <b>G-MAX+ - 18W Tiltable LED COB Down Light - Square</b> |       |           |      |            |         |     |            |
| GL92695WW  | 18W   | 3000K     | >0.9 | 115x115x38 | ø105    | >80 | 120°       |
| GL92695NW  | 18W   | 4000K     | >0.9 | 115x115x38 | ø105    | >80 | 120°       |
| GL92695CD  | 18W   | 6000K     | >0.9 | 115x115x38 | ø105    | >80 | 120°       |



| ITEM CODE  | POWER | COL. TEMP | PF   | DIMENSION  | CUT OUT | CRI | BEAM ANGLE |
|--|-------|-----------|------|------------|---------|-----|------------|
| <b>G-MAX+ - 22W Tiltable LED COB Down Light - Square</b> |       |           |      |            |         |     |            |
| GL92696WW  | 22W   | 3000K     | >0.9 | 135x135x38 | ø125    | >80 | 120°       |
| GL92696NW  | 22W   | 4000K     | >0.9 | 135x135x38 | ø125    | >80 | 120°       |
| GL92696CD  | 22W   | 6000K     | >0.9 | 135x135x38 | ø125    | >80 | 120°       |

All dimensions are in mm



Make every moment  
extraordinary.



**G-TILT & PLUTO LED COB DOWN LIGHT**

Want to focus your light at a different angle? The G-Tilt with its swivel head allows you to accurately point the light at the desired areas. The Pluto, on the other hand, is a focus light with clear lens. While the G-Tilt offers a wide beam angle, the Pluto directs a more focused beam of light on the object. All-metal devices, both, the G-Tilt and Pluto are extremely sleek and stylish in appearance.



**G-Tilt Features**

- Sleek, elegant COB
- Matt, diffused lens
- Wide angle tilt to focus light beam
- Die cast aluminium body
- High lumen output

**Pluto Features**

- High bright COB down light
- Matt, diffused lens
- Swivel mechanism to focus light
- Die cast aluminium body
- High lumen output



| ITEM CODE                                     | POWER | COL. TEMP | PF   | DIMENSION | CUT OUT | CRI | BEAM ANGLE |
|---|-------|-----------|------|-----------|---------|-----|------------|
| <b>G-TILT - 3W LED COB Down Light - Round</b> |       |           |      |           |         |     |            |
| GL91600WW                                     | 3W    | 3000K     | >0.9 | ø55x25    | ø45     | >80 | 120°       |
| GL91600NW                                     | 3W    | 4000K     | >0.9 | ø55x25    | ø45     | >80 | 120°       |
| GL91600CD                                     | 3W    | 6000K     | >0.9 | ø55x25    | ø45     | >80 | 120°       |



| ITEM CODE                                     | POWER | COL. TEMP | PF   | DIMENSION | CUT OUT | CRI | BEAM ANGLE |
|---|-------|-----------|------|-----------|---------|-----|------------|
| <b>G-TILT - 6W LED COB Down Light - Round</b> |       |           |      |           |         |     |            |
| GL91601WW                                     | 6W    | 3000K     | >0.9 | ø85x25    | ø75     | >80 | 120°       |
| GL91601NW                                     | 6W    | 4000K     | >0.9 | ø85x25    | ø75     | >80 | 120°       |
| GL91601CD                                     | 6W    | 6000K     | >0.9 | ø85x25    | ø75     | >80 | 120°       |



| ITEM CODE                                      | POWER | COL. TEMP | PF   | DIMENSION | CUT OUT | CRI | BEAM ANGLE |
|--|-------|-----------|------|-----------|---------|-----|------------|
| <b>G-TILT - 12W LED COB Down Light - Round</b> |       |           |      |           |         |     |            |
| GL91602WW                                      | 12W   | 3000K     | >0.9 | ø125x25   | ø110    | >80 | 120°       |
| GL91602NW                                      | 12W   | 4000K     | >0.9 | ø125x25   | ø110    | >80 | 120°       |
| GL91602CD                                      | 12W   | 6000K     | >0.9 | ø125x25   | ø110    | >80 | 120°       |

**G-tilt**

| ITEM CODE                                    | POWER | COL. TEMP | PF   | DIMENSION | CUT OUT | CRI | BEAM ANGLE |
|--|-------|-----------|------|-----------|---------|-----|------------|
| <b>PLUTO - 7W LED COB Down Light - Round</b> |       |           |      |           |         |     |            |
| GL91657WW                                    | 7W    | 3000K     | >0.9 | ø95x45    | ø80     | >80 | 24°        |
| GL91657NW                                    | 7W    | 4000K     | >0.9 | ø95x45    | ø80     | >80 | 24°        |
| GL91657CD                                    | 7W    | 6000K     | >0.9 | ø95x45    | ø80     | >80 | 24°        |



| ITEM CODE                                     | POWER | COL. TEMP | PF   | DIMENSION | CUT OUT | CRI | BEAM ANGLE |
|---|-------|-----------|------|-----------|---------|-----|------------|
| <b>PLUTO - 12W LED COB Down Light - Round</b> |       |           |      |           |         |     |            |
| GL91659WW                                     | 12W   | 3000K     | >0.9 | ø116x55   | ø90     | >80 | 24°        |
| GL91659NW                                     | 12W   | 4000K     | >0.9 | ø116x55   | ø90     | >80 | 24°        |
| GL91659CD                                     | 12W   | 6000K     | >0.9 | ø116x55   | ø90     | >80 | 24°        |



| ITEM CODE                                     | POWER | COL. TEMP | PF   | DIMENSION | CUT OUT | CRI | BEAM ANGLE |
|---|-------|-----------|------|-----------|---------|-----|------------|
| <b>PLUTO - 18W LED COB Down Light - Round</b> |       |           |      |           |         |     |            |
| GL91660WW                                     | 18W   | 3000K     | >0.9 | ø140x60   | ø100    | >80 | 24°        |
| GL91660NW                                     | 18W   | 4000K     | >0.9 | ø140x60   | ø100    | >80 | 24°        |
| GL91660CD                                     | 18W   | 6000K     | >0.9 | ø140x60   | ø100    | >80 | 24°        |



**Pluto**

All dimensions are in mm



The world doesn't get  
better by chance.  
It does by change!



Do you change your LED lights every time you change your interiors? If only you could, you would say! That's no longer difficult or expensive if you've installed G-Twist LED lights. A modular unit, the G-Twist has a middle ring that frames the LED light attractively. By simply changing the middle ring, you can alter the look of your LED light to suit your interiors! There are five design options to choose from – each exciting in its own way. So now, there's no reason to hold back. Change the look, any time you feel!



Add a twist. Make light more interesting.



SMART, INTELLIGENT, FLEXIBLE  
*MODULAR LIGHTS*



G-TWIST

Features

- Modular concept, COB & SMD
- Easy to replace LED module
- Extremely slim down light
- Die cast aluminium body
- Anti-glare light
- High lumen output
- Replaceable frames to customize angle of light
- Also available in colour changing module

**G-TWIST LED COB DOWN LIGHT**

The G-Twist is an example of a simple idea made extraordinary by adding an innovation to it. A completely modular unit, the G-Twist enables you to detach the LED light from its base with a simple twist. It thus offers you unbelievable convenience and cost-efficiency. Along with easier replacement, the G-Twist helps you avoid damage to ceilings, switch between light types and even change the wattage. You can even change the middle frame to change the angle of the light beam. It's so simple yet so amazing!





**G-TWIST**  
SMART LED LIGHTING



| ITEM CODE   | POWER | COL. TEMP | PF   | DIMENSION | CUT OUT | CRI | BEAM ANGLE |
|---|-------|-----------|------|-----------|---------|-----|------------|
| <b>G-TWIST T1 - 5W COB with Substitutable Head &amp; Driver - Round</b> |       |           |      |           |         |     |            |
| GL91664WW   | 5W    | 3000K     | >0.5 | ø70x50    | ø60     | >80 | 24°        |
| GL91664NW   | 5W    | 4000K     | >0.5 | ø70x50    | ø60     | >80 | 24°        |
| GL91664CD   | 5W    | 6000K     | >0.5 | ø70x50    | ø60     | >80 | 24°        |

| ITEM CODE  | POWER | COL. TEMP | PF   | DIMENSION | CUT OUT | CRI | BEAM ANGLE |
|--|-------|-----------|------|-----------|---------|-----|------------|
| <b>G-TWIST T2 - 10W COB with Substitutable Head &amp; Driver - Round</b> |       |           |      |           |         |     |            |
| GL91668WW  | 10W   | 3000K     | >0.5 | ø98x50    | ø80     | >80 | 24°        |
| GL91668NW  | 10W   | 4000K     | >0.5 | ø98x50    | ø80     | >80 | 24°        |
| GL91668CD  | 10W   | 6000K     | >0.5 | ø98x50    | ø80     | >80 | 24°        |

| ITEM CODE  | POWER | COL. TEMP | PF   | DIMENSION | CUT OUT | CRI | BEAM ANGLE |
|--|-------|-----------|------|-----------|---------|-----|------------|
| <b>G-TWIST T2 - 15W COB with Substitutable Head &amp; Driver - Round</b> |       |           |      |           |         |     |            |
| GL91669WW  | 15W   | 3000K     | >0.5 | ø128x75   | ø110    | >80 | 24°        |
| GL91669NW  | 15W   | 4000K     | >0.5 | ø128x75   | ø110    | >80 | 24°        |
| GL91669CD  | 15W   | 6000K     | >0.5 | ø128x75   | ø110    | >80 | 24°        |

| ITEM CODE   | POWER | COL. TEMP | PF   | DIMENSION | CUT OUT | CRI | BEAM ANGLE |
|---|-------|-----------|------|-----------|---------|-----|------------|
| <b>G-TWIST T2 - 10W COB with Substitutable Head &amp; Driver - Square</b> |       |           |      |           |         |     |            |
| GL92668WW   | 10W   | 3000K     | >0.5 | 98x98x50  | ø80     | >80 | 24°        |
| GL92668NW   | 10W   | 4000K     | >0.5 | 98x98x50  | ø80     | >80 | 24°        |
| GL92668CD   | 10W   | 6000K     | >0.5 | 98x98x50  | ø80     | >80 | 24°        |

| ITEM CODE   | POWER | COL. TEMP | PF   | DIMENSION  | CUT OUT | CRI | BEAM ANGLE |
|---|-------|-----------|------|------------|---------|-----|------------|
| <b>G-TWIST T2 - 15W COB with Substitutable Head &amp; Driver - Square</b> |       |           |      |            |         |     |            |
| GL92669WW   | 15W   | 3000K     | >0.5 | 128x128x75 | ø110    | >80 | 24°        |
| GL92669NW   | 15W   | 4000K     | >0.5 | 128x128x75 | ø110    | >80 | 24°        |
| GL92669CD   | 15W   | 6000K     | >0.5 | 128x128x75 | ø110    | >80 | 24°        |

| ITEM CODE  | POWER | COL. TEMP | PF   | DIMENSION | CUT OUT | CRI | BEAM ANGLE |
|--|-------|-----------|------|-----------|---------|-----|------------|
| <b>G-TWIST T3 - 10W Tilttable COB with Substitutable Head &amp; Driver - Round</b> |       |           |      |           |         |     |            |
| GL91673WW  | 10W   | 3000K     | >0.5 | ø98x75    | ø80     | >80 | 24°        |
| GL91673NW  | 10W   | 4000K     | >0.5 | ø98x75    | ø80     | >80 | 24°        |
| GL91673CD  | 10W   | 6000K     | >0.5 | ø98x75    | ø80     | >80 | 24°        |

| ITEM CODE   | POWER | COL. TEMP | PF   | DIMENSION | CUT OUT | CRI | BEAM ANGLE |
|---|-------|-----------|------|-----------|---------|-----|------------|
| <b>G-TWIST T3 - 10W Tilttable COB with Substitutable Head &amp; Driver - Square</b> |       |           |      |           |         |     |            |
| GL92673WW   | 10W   | 3000K     | >0.5 | 98x98x75  | ø80     | >80 | 24°        |
| GL92673NW   | 10W   | 4000K     | >0.5 | 98x98x75  | ø80     | >80 | 24°        |
| GL92673CD   | 10W   | 6000K     | >0.5 | 98x98x75  | ø80     | >80 | 24°        |

| ITEM CODE  | POWER | COL. TEMP | PF   | DIMENSION | CUT OUT | CRI | BEAM ANGLE |
|--|-------|-----------|------|-----------|---------|-----|------------|
| <b>G-TWIST T4 - 10W Tilttable COB with Substitutable Head &amp; Driver - Round</b> |       |           |      |           |         |     |            |
| GL91677WW  | 10W   | 3000K     | >0.5 | ø90x75    | ø80     | >80 | 24°        |
| GL91677NW  | 10W   | 4000K     | >0.5 | ø90x75    | ø80     | >80 | 24°        |
| GL91677CD  | 10W   | 6000K     | >0.5 | ø90x75    | ø80     | >80 | 24°        |



All dimensions are in mm



| ITEM CODE  | POWER | COL. TEMP | PF   | DIMENSION | CUT OUT | CRI | BEAM ANGLE |
|--|-------|-----------|------|-----------|---------|-----|------------|
| <b>G-TWIST T6 - 5W LED Down Light with Substitutable Head &amp; Driver - Round</b> |       |           |      |           |         |     |            |
| GL91683WW  | 5W    | 3000K     | >0.5 | ø98x50    | ø80     | >80 | 60°        |
| GL91683NW  | 5W    | 4000K     | >0.5 | ø98x50    | ø80     | >80 | 60°        |
| GL91683CD  | 5W    | 6000K     | >0.5 | ø98x50    | ø80     | >80 | 60°        |



| ITEM CODE   | POWER | COL. TEMP | PF   | DIMENSION | CUT OUT | CRI | BEAM ANGLE |
|---|-------|-----------|------|-----------|---------|-----|------------|
| <b>G-TWIST T6 - 10W LED Down Light with Substitutable Head &amp; Driver - Round</b> |       |           |      |           |         |     |            |
| GL91685WW   | 10W   | 3000K     | >0.5 | ø98x50    | ø80     | >80 | 60°        |
| GL91685NW   | 10W   | 4000K     | >0.5 | ø98x50    | ø80     | >80 | 60°        |
| GL91685CD   | 10W   | 6000K     | >0.5 | ø98x50    | ø80     | >80 | 60°        |



| ITEM CODE   | POWER | COL. TEMP | PF   | DIMENSION | CUT OUT | CRI | BEAM ANGLE |
|---|-------|-----------|------|-----------|---------|-----|------------|
| <b>G-TWIST T6 - 15W LED Down Light with Substitutable Head &amp; Driver - Round</b> |       |           |      |           |         |     |            |
| GL91687WW   | 15W   | 3000K     | >0.5 | ø128x75   | ø110    | >80 | 60°        |
| GL91687NW   | 15W   | 4000K     | >0.5 | ø128x75   | ø110    | >80 | 60°        |
| GL91687CD   | 15W   | 6000K     | >0.5 | ø128x75   | ø110    | >80 | 60°        |



| ITEM CODE   | POWER | COL. TEMP | PF   | DIMENSION | CUT OUT | CRI | BEAM ANGLE |
|---|-------|-----------|------|-----------|---------|-----|------------|
| <b>G-TWIST T6 - 24W LED Down Light with Substitutable Head &amp; Driver - Round</b> |       |           |      |           |         |     |            |
| GL91688WW   | 24W   | 3000K     | >0.5 | ø185x76   | ø150    | >80 | 60°        |
| GL91688NW   | 24W   | 4000K     | >0.5 | ø185x76   | ø150    | >80 | 60°        |
| GL91688CD   | 24W   | 6000K     | >0.5 | ø185x76   | ø150    | >80 | 60°        |



| ITEM CODE   | POWER | COL. TEMP | PF   | DIMENSION | CUT OUT | CRI | BEAM ANGLE |
|---|-------|-----------|------|-----------|---------|-----|------------|
| <b>G-TWIST T6 - 5W LED Down Light with Substitutable Head &amp; Driver - Square</b> |       |           |      |           |         |     |            |
| GL92683WW   | 5W    | 3000K     | >0.5 | 98x98x50  | ø80     | >80 | 60°        |
| GL92683NW   | 5W    | 4000K     | >0.5 | 98x98x50  | ø80     | >80 | 60°        |
| GL92683CD   | 5W    | 6000K     | >0.5 | 98x98x50  | ø80     | >80 | 60°        |

| ITEM CODE  | POWER | COL. TEMP | PF   | DIMENSION | CUT OUT | CRI | BEAM ANGLE |
|--|-------|-----------|------|-----------|---------|-----|------------|
| <b>G-TWIST T6 - 10W LED Down Light with Substitutable Head &amp; Driver - Square</b> |       |           |      |           |         |     |            |
| GL92685WW  | 10W   | 3000K     | >0.5 | 98x98x50  | ø80     | >80 | 60°        |
| GL92685NW  | 10W   | 4000K     | >0.5 | 98x98x50  | ø80     | >80 | 60°        |
| GL92685CD  | 10W   | 6000K     | >0.5 | 98x98x50  | ø80     | >80 | 60°        |



| ITEM CODE  | POWER | COL. TEMP | PF   | DIMENSION  | CUT OUT | CRI | BEAM ANGLE |
|--|-------|-----------|------|------------|---------|-----|------------|
| <b>G-TWIST T6 - 15W LED Down Light with Substitutable Head &amp; Driver - Square</b> |       |           |      |            |         |     |            |
| GL92687WW  | 15W   | 3000K     | >0.5 | 128x128x75 | ø110    | >80 | 60°        |
| GL92687NW  | 15W   | 4000K     | >0.5 | 128x128x75 | ø110    | >80 | 60°        |
| GL92687CD  | 15W   | 6000K     | >0.5 | 128x128x75 | ø110    | >80 | 60°        |



| ITEM CODE  | POWER | COL. TEMP | PF   | DIMENSION  | CUT OUT | CRI | BEAM ANGLE |
|--|-------|-----------|------|------------|---------|-----|------------|
| <b>G-TWIST T6 - 24W LED Down Light with Substitutable Head &amp; Driver - Square</b> |       |           |      |            |         |     |            |
| GL92688WW  | 24W   | 3000K     | >0.5 | 185x185x76 | ø150    | >80 | 60°        |
| GL92688NW  | 24W   | 4000K     | >0.5 | 185x185x76 | ø150    | >80 | 60°        |
| GL92688CD  | 24W   | 6000K     | >0.5 | 185x185x76 | ø150    | >80 | 60°        |



| ITEM CODE   | POWER | COL. TEMP | PF   | DIMENSION | CUT OUT | CRI | BEAM ANGLE |
|---|-------|-----------|------|-----------|---------|-----|------------|
| <b>G-TWIST T6 - LED Down Light with Substitutable Head &amp; Driver (Colour Changing) - Round</b> |       |           |      |           |         |     |            |
| GL91684CT   | 7W    | CCT       | >0.5 | ø98x75    | ø80     | >80 | 60°        |
| GL91686CT   | 12W   | CCT       | >0.5 | ø128x75   | ø110    | >80 | 60°        |



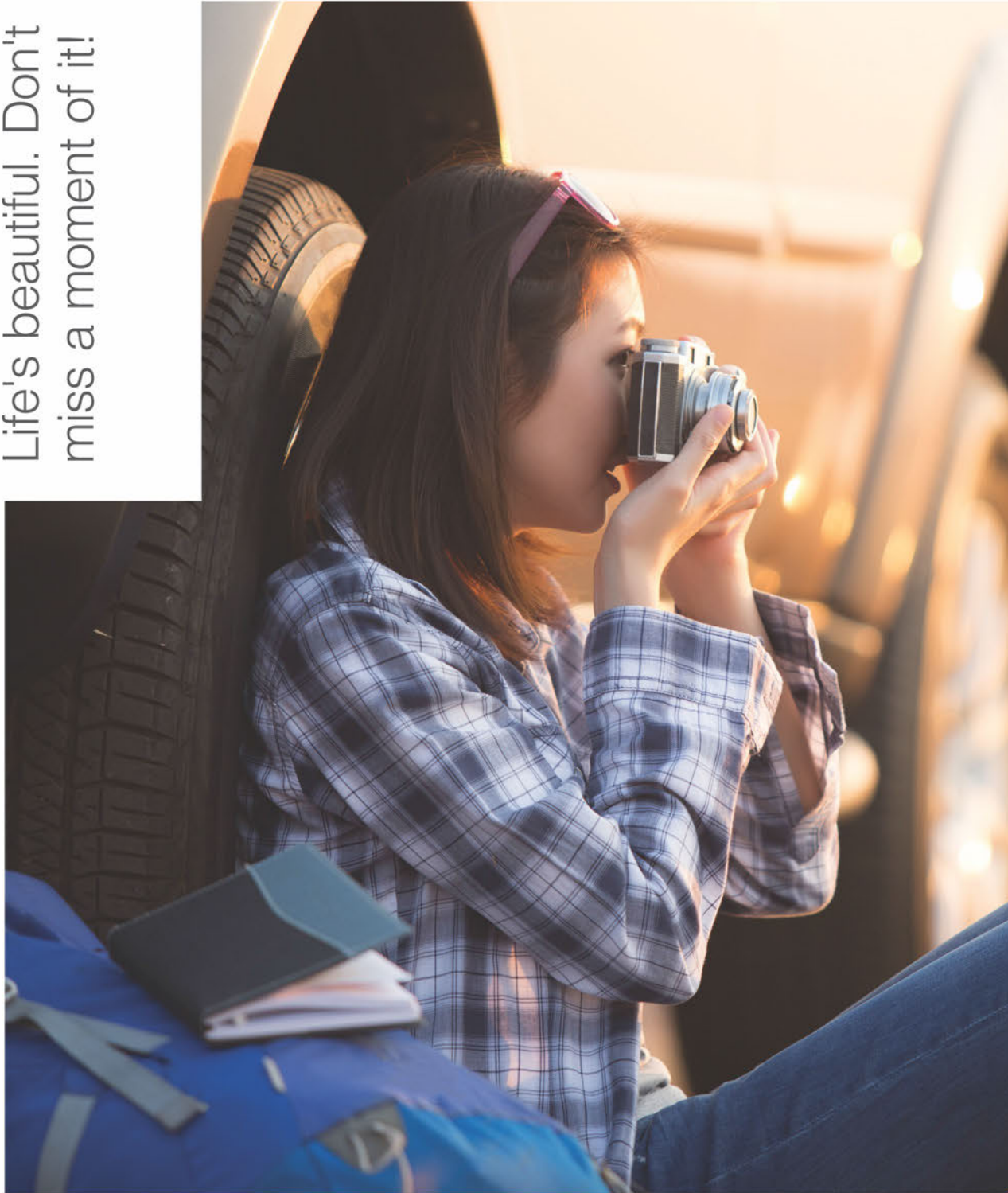
| ITEM CODE  | POWER | COL. TEMP | PF   | DIMENSION  | CUT OUT | CRI | BEAM ANGLE |
|--|-------|-----------|------|------------|---------|-----|------------|
| <b>G-TWIST T6 - LED Down Light with Substitutable Head &amp; Driver (Colour Changing) - Square</b> |       |           |      |            |         |     |            |
| GL92684CT  | 7W    | CCT       | >0.5 | 98x98x75   | ø80     | >80 | 60°        |
| GL92686CT  | 12W   | CCT       | >0.5 | 128x128x75 | ø110    | >80 | 60°        |



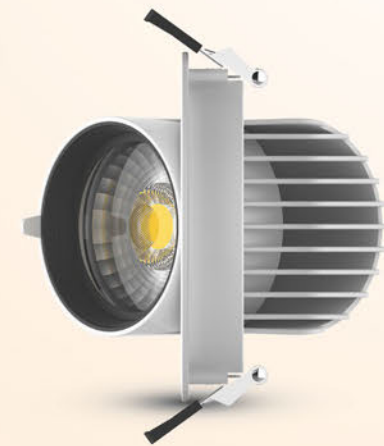
All dimensions are in mm



Life's beautiful. Don't miss a moment of it!



**ZOOM+**  
COB DOWN LIGHT

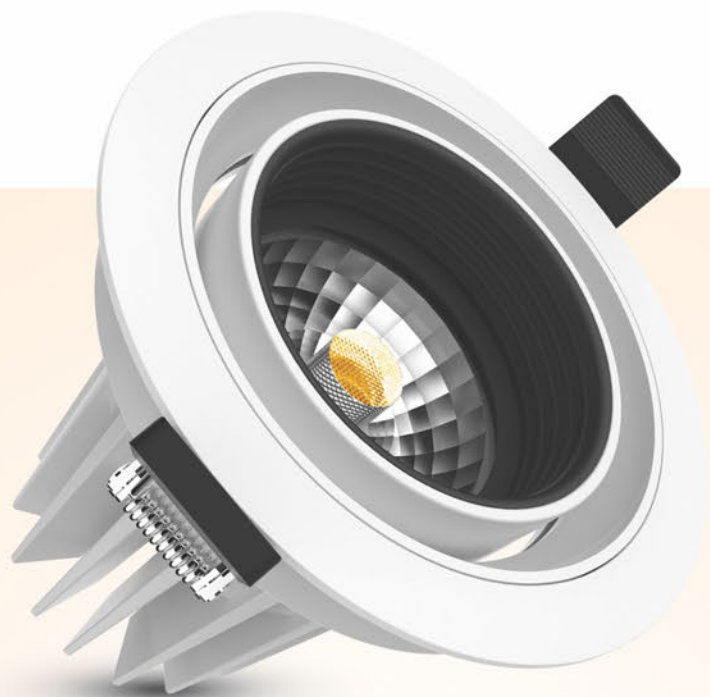


**ZOOM+ COB DOWN LIGHT**

Need to focus light on a particular task or a specific area in the room, the Zoom+ does the job better than anyone else. Mounted on a swivel mechanism, the Zoom+ enjoys perfect maneuverability that allows you to project the light at the perfect angle. Ruggedly built yet stylish in appearance, the Zoom+ can be easily mounted on walls as well as ceilings in domestic and commercial settings.

**Features**

- High quality COB spotlight
- Wide commercial application
- Useful in high end showrooms
- Powder coated body
- Die cast aluminium body



### ZOOM COB DOWN LIGHT

If you need a light that's as good as the Zoom+ but a little less directional, then you should opt for the Zoom LED light. It is similar to the Zoom+ in all respects except for its smaller swivel angle. With its rugged built and precisely finished, powder coated body, the Zoom will be the perfect fit in almost every setting. Both the Zoom and Zoom+ lights are wonderful options for subtly focusing just the right amount of light where you need!

## ZOOM COB DOWN LIGHT



| ITEM CODE | POWER | COL. TEMP | PF | DIMENSION | CUT OUT | CRI | BEAM ANGLE |
|-----------|-------|-----------|----|-----------|---------|-----|------------|
|-----------|-------|-----------|----|-----------|---------|-----|------------|

#### ZOOM+ - 15W COB Trunk Spot Light

|           |     |       |      |        |     |     |     |
|-----------|-----|-------|------|--------|-----|-----|-----|
| GL91838WW | 15W | 3000K | >0.9 | ø96x96 | ø85 | >85 | 24° |
| GL91838NW | 15W | 4000K | >0.9 | ø96x96 | ø85 | >85 | 24° |
| GL91838CT | 15W | 6000K | >0.9 | ø96x96 | ø85 | >85 | 24° |

#### ZOOM+ - 25W COB Trunk Spot Light

|           |     |       |      |          |      |     |     |
|-----------|-----|-------|------|----------|------|-----|-----|
| GL91839WW | 25W | 3000K | >0.9 | ø114x109 | ø105 | >85 | 24° |
| GL91839NW | 25W | 4000K | >0.9 | ø114x109 | ø105 | >85 | 24° |
| GL91839CD | 25W | 6000K | >0.9 | ø114x109 | ø105 | >85 | 24° |

#### ZOOM+ - 35W COB Trunk Spot Light

|           |     |       |      |          |      |     |     |
|-----------|-----|-------|------|----------|------|-----|-----|
| GL91840WW | 35W | 3000K | >0.9 | ø140x136 | ø125 | >85 | 24° |
| GL91840NW | 35W | 4000K | >0.9 | ø140x136 | ø125 | >85 | 24° |
| GL91840CD | 35W | 6000K | >0.9 | ø140x136 | ø125 | >85 | 24° |

#### ZOOM - 12W COB Down Light

|           |     |       |      |        |     |     |     |
|-----------|-----|-------|------|--------|-----|-----|-----|
| GL91833WW | 12W | 3000K | >0.9 | ø96x85 | ø85 | >85 | 24° |
| GL91833NW | 12W | 4000K | >0.9 | ø96x85 | ø85 | >85 | 24° |
| GL91833CD | 12W | 6000K | >0.9 | ø96x85 | ø85 | >85 | 24° |

#### ZOOM - 20W COB Down Light

|           |     |       |      |          |      |     |     |
|-----------|-----|-------|------|----------|------|-----|-----|
| GL91834WW | 20W | 3000K | >0.9 | ø114x100 | ø105 | >85 | 24° |
| GL91834NW | 20W | 4000K | >0.9 | ø114x100 | ø105 | >85 | 24° |
| GL91834CD | 20W | 6000K | >0.9 | ø114x100 | ø105 | >85 | 24° |

#### ZOOM - 30W COB Down Light

|           |     |       |      |          |      |     |     |
|-----------|-----|-------|------|----------|------|-----|-----|
| GL91835WW | 30W | 3000K | >0.9 | ø140x119 | ø125 | >85 | 24° |
| GL91835NW | 30W | 4000K | >0.9 | ø140x119 | ø125 | >85 | 24° |
| GL91835CD | 30W | 6000K | >0.9 | ø140x119 | ø125 | >85 | 24° |

All dimensions are in mm







**FABIO & SIMPLO DOWN LIGHT**

The Fabio and Simplo not only put the spotlight on your decor, they are designed to be objects of desire on their own! The Fabio is a timeless design that can complement any style or expression. With its rich, black matte finish on the outside and golden hue on the inside, the Fabio is fabulous on the eye. The Simplo is an avant-garde spotlight that is exciting in its simplicity. Shaped like a water bubble, the Simplo can be the ideal choice for futuristic or even exotic settings. Both the Fabio and Simplo are lights that deserve a second look.

| ITEM CODE | POWER | COL. TEMP | PF | DIMENSION | CUT OUT | CRI | BEAM ANGLE |
|-----------|-------|-----------|----|-----------|---------|-----|------------|
|-----------|-------|-----------|----|-----------|---------|-----|------------|

**FABIO - 5W COB Down Light**

|           |    |       |      |        |     |     |     |
|-----------|----|-------|------|--------|-----|-----|-----|
| GL91851WW | 5W | 3000K | >0.9 | ø60x70 | ø56 | >80 | 23° |
| GL91851NW | 5W | 4000K | >0.9 | ø60x70 | ø56 | >80 | 23° |
| GL91851CD | 5W | 6000K | >0.9 | ø60x70 | ø56 | >80 | 23° |

**FABIO - 10W COB Down Light**

|           |     |       |      |        |     |     |     |
|-----------|-----|-------|------|--------|-----|-----|-----|
| GL91852WW | 10W | 3000K | >0.9 | ø73x87 | ø69 | >80 | 23° |
| GL91852NW | 10W | 4000K | >0.9 | ø73x87 | ø69 | >80 | 23° |
| GL91852CD | 10W | 6000K | >0.9 | ø73x87 | ø69 | >80 | 23° |

**FABIO - 15W COB Down Light**

|           |     |       |      |         |     |     |     |
|-----------|-----|-------|------|---------|-----|-----|-----|
| GL91853WW | 15W | 3000K | >0.9 | ø80x110 | ø76 | >80 | 23° |
| GL91853NW | 15W | 4000K | >0.9 | ø80x110 | ø76 | >80 | 23° |
| GL91853CD | 15W | 6000K | >0.9 | ø80x110 | ø76 | >80 | 23° |

**SIMPLO - 5W LED Down Light**

|           |    |       |      |        |     |     |      |
|-----------|----|-------|------|--------|-----|-----|------|
| GL91856WW | 5W | 3000K | >0.9 | ø70x55 | ø50 | >80 | 120° |
| GL91856NW | 5W | 4000K | >0.9 | ø70x55 | ø50 | >80 | 120° |
| GL91856CD | 5W | 6000K | >0.9 | ø70x55 | ø50 | >80 | 120° |

**SIMPLO - 7W LED Down Light**

|           |    |       |      |        |     |     |      |
|-----------|----|-------|------|--------|-----|-----|------|
| GL91857WW | 7W | 3000K | >0.9 | ø90x60 | ø70 | >80 | 120° |
| GL91857NW | 7W | 4000K | >0.9 | ø90x60 | ø70 | >80 | 120° |
| GL91857CD | 7W | 6000K | >0.9 | ø90x60 | ø70 | >80 | 120° |



All dimensions are in mm



Inspired by the past.  
Crafted for the future!



**G-SPIRO LED DOWN LIGHT**

Looks can be deceptive. The G-Spiro exemplifies this with a simple design that incorporates the very best in lighting technology and lighting efficiency, yet operates like a traditional light bulb. A modular design, the LED light can be fixed or removed with a classic twist! Timeless in its appeal, the G-Spiro is available in multiple colours that can be changed and installed any time you want!



**G-spiro**  
LED DOWN LIGHT

- Features**
- Modular with replaceable LED module
  - LED module available in multiple colours
  - Twist to remove the LED module
  - High quality, polycarbonate body
  - High grade diffuser

| ITEM CODE                                  | POWER | COL. TEMP | PF   | DIMENSION | CUT OUT | CRI | BEAM ANGLE |
|--|-------|-----------|------|-----------|---------|-----|------------|
| <b>G-SPIRO - 5W LED Down Light - Round</b> |       |           |      |           |         |     |            |
| GL91508CD                                  | 5W    | 6500K     | >0.6 | ø110x60   | ø85     | >85 | 100°       |
| GL91508WW                                  | 5W    | 3000K     | >0.6 | ø110x60   | ø85     | >85 | 100°       |
| GL91508RD                                  | 5W    | RED       | >0.6 | ø110x60   | ø85     | >85 | 100°       |
| GL91508BL                                  | 5W    | BLUE      | >0.6 | ø110x60   | ø85     | >85 | 100°       |
| GL91508GN                                  | 5W    | GREEN     | >0.6 | ø110x60   | ø85     | >85 | 100°       |





**G-dome**  
LED DOWN LIGHT



**OCEANO**  
LED DOWN LIGHT



**Atom**  
LED DOWN LIGHT



**OCEANO+**  
LED DOWN LIGHT

The G-Dome, Oceano, Oceano+ and Atom are delightful downlights from Goldmedal. While the G-Dome is recessed mounted, the Oceano and Atom can be surface-mounted directly to a ceiling junction box. The in-built drivers ensure easy, hassle-free installation. All four LED down light have a superior finish and offer three colour temperatures to choose from: White, Warm White and Neutral White. The G-Dome, Oceano, Oceano+ and Atom are ideal solutions for both residential as well as commercial environments.



| ITEM CODE   | POWER | COL. TEMP | PF   | DIMENSION | CUT OUT | CRI | BEAM ANGLE |
|---|-------|-----------|------|-----------|---------|-----|------------|
| <b>G-DOME - 5W LED Down Light with inbuilt driver - Round</b> |       |           |      |           |         |     |            |
| GL91516WW   | 5W    | 3000K     | >0.5 | ø100x46   | ø75     | >80 | 115°       |
| GL91516CD   | 5W    | 6500K     | >0.5 | ø100x46   | ø75     | >80 | 115°       |



| ITEM CODE   | POWER | COL. TEMP | PF   | DIMENSION | CUT OUT | CRI | BEAM ANGLE |
|---|-------|-----------|------|-----------|---------|-----|------------|
| <b>G-DOME - 9W LED Down Light with inbuilt driver - Round</b> |       |           |      |           |         |     |            |
| GL91517WW   | 9W    | 3000K     | >0.9 | ø120x50   | ø90     | >80 | 115°       |
| GL91517CD   | 9W    | 6500K     | >0.9 | ø120x50   | ø90     | >80 | 115°       |



| ITEM CODE  | POWER | COL. TEMP | PF   | DIMENSION | CUT OUT | CRI | BEAM ANGLE |
|--|-------|-----------|------|-----------|---------|-----|------------|
| <b>G-DOME - 12W LED Down Light with inbuilt driver - Round</b> |       |           |      |           |         |     |            |
| GL91518WW  | 12W   | 3000K     | >0.9 | ø145x55   | ø120    | >80 | 115°       |
| GL91518CD  | 12W   | 6500K     | >0.9 | ø145x55   | ø120    | >80 | 115°       |



| ITEM CODE  | POWER | COL. TEMP | PF   | DIMENSION | CUT OUT | CRI | BEAM ANGLE |
|--|-------|-----------|------|-----------|---------|-----|------------|
| <b>G-DOME - 18W LED Down Light with inbuilt driver - Round</b> |       |           |      |           |         |     |            |
| GL91520WW  | 18W   | 3000K     | >0.9 | ø175x55   | ø140    | >80 | 115°       |
| GL91520CD  | 18W   | 6500K     | >0.9 | ø175x55   | ø140    | >80 | 115°       |

| ITEM CODE                               | POWER | COL. TEMP | PF   | DIMENSION | CUT OUT | CRI | BEAM ANGLE |
|---|-------|-----------|------|-----------|---------|-----|------------|
| <b>ATOM - 3W LED Down Light - Round</b> |       |           |      |           |         |     |            |
| GL91500CD                               | 3W    | 6000K     | >0.5 | ø110x50   | ø70     | >80 | 110°       |
| GL91500WW                               | 3W    | 3000K     | >0.5 | ø110x50   | ø70     | >80 | 110°       |
| GL91500RD                               | 3W    | RED       | >0.5 | ø110x50   | ø70     | >80 | 110°       |
| GL91500BL                               | 3W    | BLUE      | >0.5 | ø110x50   | ø70     | >80 | 110°       |
| GL91500GN                               | 3W    | GREEN     | >0.5 | ø110x50   | ø70     | >80 | 110°       |



| ITEM CODE                               | POWER | COL. TEMP | PF   | DIMENSION | CUT OUT | CRI | BEAM ANGLE |
|---|-------|-----------|------|-----------|---------|-----|------------|
| <b>ATOM - 5W LED Down Light - Round</b> |       |           |      |           |         |     |            |
| GL91502CD                               | 5W    | 6000K     | >0.5 | ø110x50   | ø70     | >80 | 110°       |
| GL91502WW                               | 5W    | 3000K     | >0.5 | ø110x50   | ø70     | >80 | 110°       |
| GL91502RD                               | 5W    | RED       | >0.5 | ø110x50   | ø70     | >80 | 110°       |
| GL91502BL                               | 5W    | BLUE      | >0.5 | ø110x50   | ø70     | >80 | 110°       |
| GL91502GN                               | 5W    | GREEN     | >0.5 | ø110x50   | ø70     | >80 | 110°       |



| ITEM CODE                                 | POWER | COL. TEMP | PF   | DIMENSION | CUT OUT | CRI | BEAM ANGLE |
|---|-------|-----------|------|-----------|---------|-----|------------|
| <b>OCEANO - 5W LED Down Light - Round</b> |       |           |      |           |         |     |            |
| GL91501CD                                 | 5W    | 6000K     | >0.9 | ø115x87   | ø95     | >85 | 115°       |



| ITEM CODE                                  | POWER | COL. TEMP | PF   | DIMENSION | CUT OUT | CRI | BEAM ANGLE |
|--|-------|-----------|------|-----------|---------|-----|------------|
| <b>OCEANO+ - 7W LED Down Light - Round</b> |       |           |      |           |         |     |            |
| GL91509CD                                  | 7W    | 6000K     | >0.9 | ø110x83   | ø80     | >80 | 115°       |



All dimensions are in mm



Live big. Dream more.  
Shine bright.



### G-SPIN SPOT DOWN LIGHT

The G-Spin, with its polycarbonate body, is a light weight spot light that can be used as accent lighting to highlight areas in any setting. Available in multiple sizes and wattages, it has a swivel mechanism that makes it easy to project the light on any object or architectural detail as required.



### G-spin

#### Features

- Sleek, elegant spot light
- Swivel mechanism
- Matt, diffused lens
- Wide angle tilt to focus light beam
- Light, polycarbonate body



| ITEM CODE                                 | POWER | COL. TEMP | PF   | DIMENSION | CUT OUT | CRI | BEAM ANGLE |
|---|-------|-----------|------|-----------|---------|-----|------------|
| <b>G-SPIN - 3W LED Spot Light - Round</b> |       |           |      |           |         |     |            |
| GL91640WW                                 | 3W    | 3000K     | >0.5 | ø75x45    | ø55     | >80 | 30°        |
| GL91640NW                                 | 3W    | 4000K     | >0.5 | ø75x45    | ø55     | >80 | 30°        |
| GL91640CD                                 | 3W    | 6500K     | >0.5 | ø75x45    | ø55     | >80 | 30°        |



|   |    |       |      |        |     |     |     |
|---|----|-------|------|--------|-----|-----|-----|
| <b>G-SPIN - 6W LED Spot Light - Round</b> |    |       |      |        |     |     |     |
| GL91641WW                                 | 6W | 3000K | >0.5 | ø90x45 | ø75 | >80 | 30° |
| GL91641NW                                 | 6W | 4000K | >0.5 | ø90x45 | ø75 | >80 | 30° |
| GL91641CD                                 | 6W | 6500K | >0.5 | ø90x45 | ø75 | >80 | 30° |



|  |     |       |      |         |      |     |     |
|--|-----|-------|------|---------|------|-----|-----|
| <b>G-SPIN - 12W LED Spot Light - Round</b> |     |       |      |         |      |     |     |
| GL91642WW                                  | 12W | 3000K | >0.5 | ø140x59 | ø120 | >80 | 30° |
| GL91642NW                                  | 12W | 4000K | >0.5 | ø140x59 | ø120 | >80 | 30° |
| GL91642CD                                  | 12W | 6500K | >0.5 | ø140x59 | ø120 | >80 | 30° |

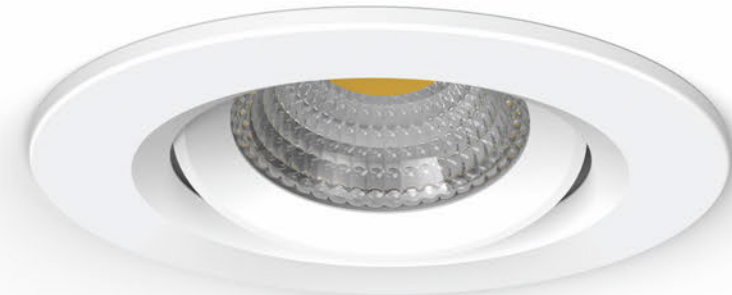


|  |    |       |      |          |     |     |     |
|--|----|-------|------|----------|-----|-----|-----|
| <b>G-SPIN - 3W LED Spot Light - Square</b> |    |       |      |          |     |     |     |
| GL92640WW                                  | 3W | 3000K | >0.5 | 75x75x45 | ø55 | >80 | 30° |
| GL92640NW                                  | 3W | 4000K | >0.5 | 75x75x45 | ø55 | >80 | 30° |
| GL92640CD                                  | 3W | 6500K | >0.5 | 75x75x45 | ø55 | >80 | 30° |



|  |    |       |      |          |     |     |     |
|--|----|-------|------|----------|-----|-----|-----|
| <b>G-SPIN - 6W LED Spot Light - Square</b> |    |       |      |          |     |     |     |
| GL92641WW                                  | 6W | 3000K | >0.5 | 90x90x45 | ø75 | >80 | 30° |
| GL92641NW                                  | 6W | 4000K | >0.5 | 90x90x45 | ø75 | >80 | 30° |
| GL92641CD                                  | 6W | 6500K | >0.5 | 90x90x45 | ø75 | >80 | 30° |

| ITEM CODE                                   | POWER | COL. TEMP | PF   | DIMENSION  | CUT OUT | CRI | BEAM ANGLE |
|---|-------|-----------|------|------------|---------|-----|------------|
| <b>G-SPIN - 12W LED Spot Light - Square</b> |       |           |      |            |         |     |            |
| GL92642WW                                   | 12W   | 3000K     | >0.5 | 140x140x59 | ø75mm   | >80 | 30°        |
| GL92642NW                                   | 12W   | 4000K     | >0.5 | 140x140x59 | ø75mm   | >80 | 30°        |
| GL92642CD                                   | 12W   | 6500K     | >0.5 | 140x140x59 | ø75mm   | >80 | 30°        |



**G-spin**  
COB DOWN LIGHT

All dimensions are in mm





| ITEM CODE  | POWER | COL. TEMP | PF   | DIMENSION | CUT OUT | CRI | BEAM ANGLE |
|--|-------|-----------|------|-----------|---------|-----|------------|
| <b>STARLITE - 1W Mini COB Spot Light - Round</b> |       |           |      |           |         |     |            |
| GL91639CD  | 1W    | 6500K     | >0.5 | ø30x23    | ø27     | >80 | 60°        |
| GL91639WW  | 1W    | 3000K     | >0.5 | ø30x23    | ø27     | >80 | 60°        |
| GL91639RD  | 1W    | Red       | >0.5 | ø30x23    | ø27     | >80 | 60°        |
| GL91639BL  | 1W    | Blue      | >0.5 | ø30x23    | ø27     | >80 | 60°        |
| GL91639GN  | 1W    | Green     | >0.5 | ø30x23    | ø27     | >80 | 60°        |



| ITEM CODE   | POWER | COL. TEMP | PF   | DIMENSION | CUT OUT | CRI | BEAM ANGLE |
|---|-------|-----------|------|-----------|---------|-----|------------|
| <b>STARLITE - 1W Mini COB Spot Light - Square</b> |       |           |      |           |         |     |            |
| GL92639CD   | 1W    | 6500K     | >0.5 | 30x30x23  | ø27     | >80 | 60°        |
| GL92639WW   | 1W    | 3000K     | >0.5 | 30x30x23  | ø27     | >80 | 60°        |
| GL92639RD   | 1W    | Red       | >0.5 | 30x30x23  | ø27     | >80 | 60°        |
| GL92639BL   | 1W    | Blue      | >0.5 | 30x30x23  | ø27     | >80 | 60°        |
| GL92639GN   | 1W    | Green     | >0.5 | 30x30x23  | ø27     | >80 | 60°        |



| ITEM CODE  | POWER | COL. TEMP | PF   | DIMENSION | CUT OUT | CRI | BEAM ANGLE |
|--|-------|-----------|------|-----------|---------|-----|------------|
| <b>STARLITE - 2W Mini COB Spot Light - Round</b> |       |           |      |           |         |     |            |
| GL91643CD  | 2W    | 6500K     | >0.5 | ø39x28    | ø32     | >80 | 60°        |
| GL91643WW  | 2W    | 3000K     | >0.5 | ø39x28    | ø32     | >80 | 60°        |
| GL91643RD  | 2W    | Red       | >0.5 | ø39x28    | ø32     | >80 | 60°        |
| GL91643BL  | 2W    | Blue      | >0.5 | ø39x28    | ø32     | >80 | 60°        |
| GL91643GN  | 2W    | Green     | >0.5 | ø39x28    | ø32     | >80 | 60°        |



| ITEM CODE   | POWER | COL. TEMP | PF   | DIMENSION | CUT OUT | CRI | BEAM ANGLE |
|---|-------|-----------|------|-----------|---------|-----|------------|
| <b>STARLITE - 2W Mini COB Spot Light - Square</b> |       |           |      |           |         |     |            |
| GL92643CD   | 2W    | 6500K     | >0.5 | 39x39x28  | ø32     | >80 | 60°        |
| GL92643WW   | 2W    | 3000K     | >0.5 | 39x39x28  | ø32     | >80 | 60°        |
| GL92643RD   | 2W    | Red       | >0.5 | 39x39x28  | ø32     | >80 | 60°        |
| GL92643BL   | 2W    | Blue      | >0.5 | 39x39x28  | ø32     | >80 | 60°        |
| GL92643GN   | 2W    | Green     | >0.5 | 39x39x28  | ø32     | >80 | 60°        |

| ITEM CODE  | POWER | COL. TEMP | PF   | DIMENSION | CUT OUT | CRI | BEAM ANGLE |
|--|-------|-----------|------|-----------|---------|-----|------------|
| <b>STARLITE - 3W Mini COB Spot Light - Round</b> |       |           |      |           |         |     |            |
| GL91644CD  | 3W    | 6500K     | >0.5 | ø36x28    | ø33     | >80 | 60°        |
| GL91644WW  | 3W    | 3000K     | >0.5 | ø36x28    | ø33     | >80 | 60°        |
| GL91644RD  | 3W    | Red       | >0.5 | ø36x28    | ø33     | >80 | 60°        |
| GL91644BL  | 3W    | Blue      | >0.5 | ø36x28    | ø33     | >80 | 60°        |
| GL91644GN  | 3W    | Green     | >0.5 | ø36x28    | ø33     | >80 | 60°        |



| ITEM CODE   | POWER | COL. TEMP | PF   | DIMENSION | CUT OUT | CRI | BEAM ANGLE |
|---|-------|-----------|------|-----------|---------|-----|------------|
| <b>STARLITE - 3W Mini COB Spot Light - Square</b> |       |           |      |           |         |     |            |
| GL92644CD   | 3W    | 6500K     | >0.5 | 36x36x28  | ø33     | >80 | 60°        |
| GL92644WW   | 3W    | 3000K     | >0.5 | 36x36x28  | ø33     | >80 | 60°        |
| GL92644RD   | 3W    | Red       | >0.5 | 36x36x28  | ø33     | >80 | 60°        |
| GL92644BL   | 3W    | Blue      | >0.5 | 36x36x28  | ø33     | >80 | 60°        |
| GL92644GN   | 3W    | Green     | >0.5 | 36x36x28  | ø33     | >80 | 60°        |



| ITEM CODE                                  | POWER | COL. TEMP | PF   | DIMENSION | CUT OUT | CRI | BEAM ANGLE |
|--|-------|-----------|------|-----------|---------|-----|------------|
| <b>EYEBOLL - 2W LED Spot Light - Round</b> |       |           |      |           |         |     |            |
| GL91646CD                                  | 2W    | 6000K     | >0.4 | ø50x25    | ø42     | >80 | 120°       |
| GL91646WW                                  | 2W    | 3000K     | >0.4 | ø50x25    | ø42     | >80 | 120°       |



| ITEM CODE                                      | POWER | COL. TEMP | PF   | DIMENSION | CUT OUT | CRI | BEAM ANGLE |
|--|-------|-----------|------|-----------|---------|-----|------------|
| <b>G-DROP - 3W Mini COB Spot Light - Round</b> |       |           |      |           |         |     |            |
| GL91699CD                                      | 3W    | 6500K     | >0.5 | ø40x35    | ø34     | >80 | 50°        |
| GL91699WW                                      | 3W    | 3000K     | >0.5 | ø40x35    | ø34     | >80 | 50°        |
| GL91699RD                                      | 3W    | Red       | >0.5 | ø40x35    | ø34     | >80 | 50°        |
| GL91699BL                                      | 3W    | Blue      | >0.5 | ø40x35    | ø34     | >80 | 50°        |
| GL91699GN                                      | 3W    | Green     | >0.5 | ø40x35    | ø34     | >80 | 50°        |



All dimensions are in mm



**G-SKY** | 2X2 SLIM LED  
PANEL LIGHT

**G-SKY 2X2 SLIM LED PANEL LIGHT**

A compact, ultra-light, high-quality LED panel, the G-Sky produces a large pool of high lumen light that is smooth and even in quality. Easy to install and constructed to last, the G-Sky is a solid fixture that can withstand the wear and tear associated with busy commercial areas. Although robustly built, the G-Sky panels create an ambience that is soft and delightful to experience.

| ITEM CODE | POWER | COL. TEMP | PF | DIMENSION | CUT OUT | CRI | BEAM ANGLE |
|-----------|-------|-----------|----|-----------|---------|-----|------------|
|-----------|-------|-----------|----|-----------|---------|-----|------------|

**SKYGLOW 2X2 - 36W Slim LED Panel Light - Square**

|           |     |       |      |         |    |     |      |
|-----------|-----|-------|------|---------|----|-----|------|
| GI90824NW | 36W | 4000K | >0.9 | 595x595 | NA | >85 | 120° |
| GI90824CD | 36W | 6500K | >0.9 | 595x595 | NA | >85 | 120° |

**SKYGLOW 2X2 - 40W Slim LED Panel Light - Square**

|           |     |       |      |         |    |     |      |
|-----------|-----|-------|------|---------|----|-----|------|
| GL90825NW | 40W | 4000K | >0.9 | 595x595 | NA | >85 | 120° |
| GL90825CD | 40W | 6500K | >0.9 | 595x595 | NA | >85 | 120° |

**SKYGLOW 2X2 - 45W Slim LED Panel Light - Square**

|           |     |       |      |         |    |     |      |
|-----------|-----|-------|------|---------|----|-----|------|
| GL90826NW | 45W | 4000K | >0.9 | 595x595 | NA | >85 | 120° |
| GL90826CD | 45W | 6500K | >0.9 | 595x595 | NA | >85 | 120° |

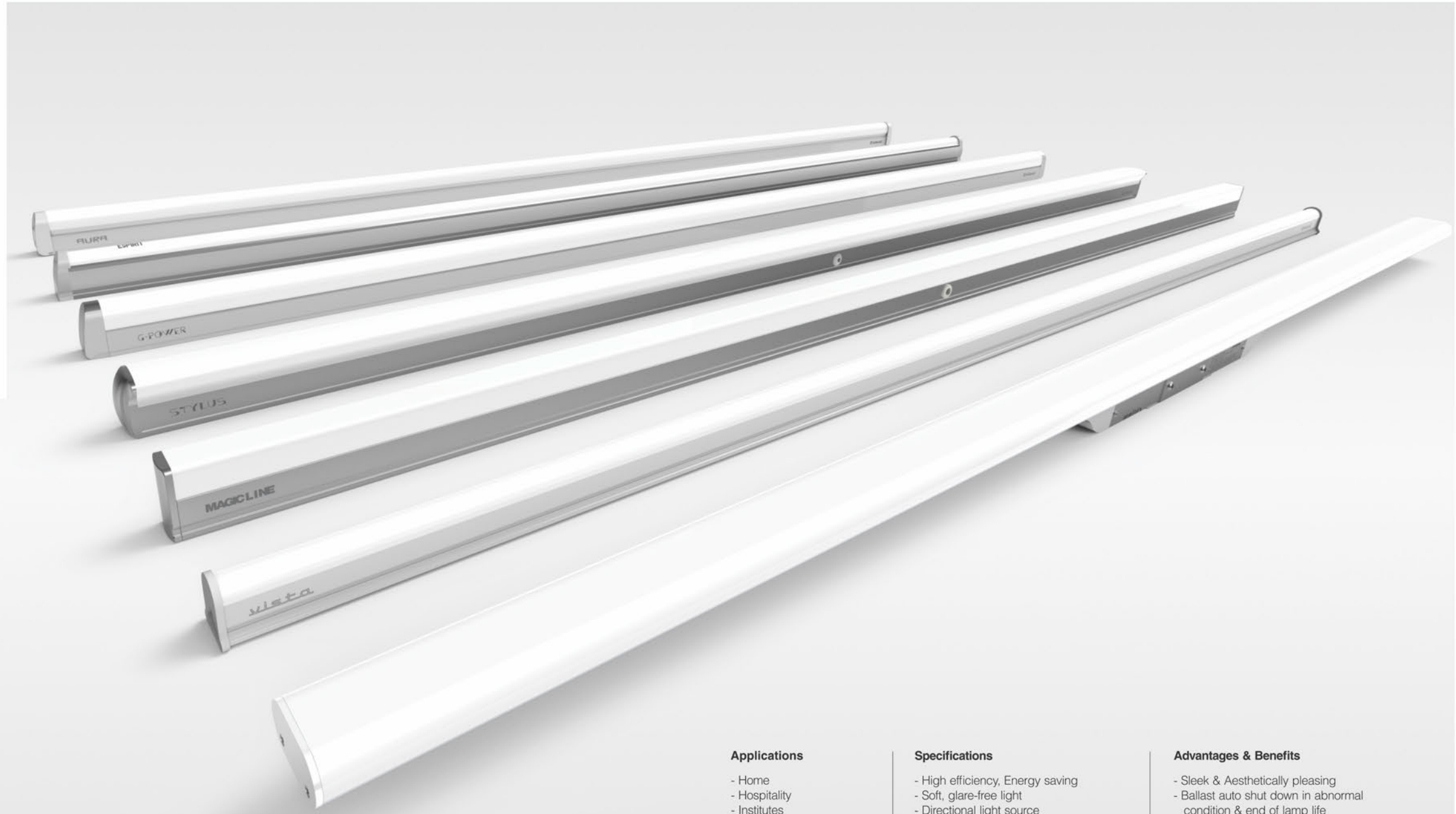


*All dimensions are in mm*





The story of light.  
Retold.



AURA ESPIRIT G-POWER STYLUS MAGICLINE *vista* *matrix*

**Applications**

- Home
- Hospitality
- Institutes
- Warehouses
- Office Interiors
- General ambient lighting, furniture, under-cabinet, mirror sides & corridors

**Specifications**

- High efficiency, Energy saving
- Soft, glare-free light
- Directional light source
- Green lighting technology
- No UV & IR radiation
- Do not use in outdoor application
- Operating Temp: -10° C to +50°C
- Lamp voltage: 140-270V
- Rated frequency: 50/60 Hz

**Advantages & Benefits**

- Sleek & Aesthetically pleasing
- Ballast auto shut down in abnormal condition & end of lamp life
- Body made of fire retardant plastic FR grade; Non flammable & fire retardant
- Aesthetic end caps increases aesthetic look

**LED BATTENS**

These sleek LED Battens are the ideal replacement for existing fluorescent T5 fittings. Using a fraction of the power consumed by fluorescent tube lights, these LED lights can last up to three times longer. Available in multiple lengths, the LED T5 light fittings are easy to install as well as retrofit. Their slim form and impact-resistance housing leads to enhanced aesthetics and durability. Switch to LED Battens to minimize the impact of lights on the planet!





| ITEM CODE   | POWER | COL. TEMP | PF   | DIMENSION | LUMENS |
|---|-------|-----------|------|-----------|--------|
| <b>MATRIX - 15W LED T5 - Aluminium Premium Batten</b> |       |           |      |           |        |
| GL90131WW   | 15W   | 3000K     | >0.9 | 605x38    | 1490lm |
| GL90131CD   | 15W   | 6500K     | >0.9 | 605x38    | 1490lm |



| ITEM CODE   | POWER | COL. TEMP | PF   | DIMENSION | LUMENS |
|---|-------|-----------|------|-----------|--------|
| <b>MATRIX - 22W LED T5 - Aluminium Premium Batten</b> |       |           |      |           |        |
| GL90132WW   | 22W   | 3000K     | >0.9 | 903x38    | 2230lm |
| GL90132CD   | 22W   | 6500K     | >0.9 | 903x38    | 2230lm |



| ITEM CODE   | POWER | COL. TEMP | PF   | DIMENSION | LUMENS |
|---|-------|-----------|------|-----------|--------|
| <b>MATRIX - 30W LED T5 - Aluminium Premium Batten</b> |       |           |      |           |        |
| GL90133WW   | 30W   | 3000K     | >0.9 | 1250x38   | 3100lm |
| GL90133CD   | 30W   | 6500K     | >0.9 | 1250x38   | 3100lm |



| ITEM CODE                            | POWER | COL. TEMP | PF   | DIMENSION | LUMENS |
|--------------------------------------|-------|-----------|------|-----------|--------|
| <b>MAGIC LINE - 9W LED T5 Batten</b> |       |           |      |           |        |
| GL90101WW                            | 9W    | 3000K     | >0.9 | 536x37    | 900lm  |
| GL90101CD                            | 9W    | 6500K     | >0.9 | 536x37    | 900lm  |



| ITEM CODE                             | POWER | COL. TEMP | PF   | DIMENSION | LUMENS |
|---------------------------------------|-------|-----------|------|-----------|--------|
| <b>MAGIC LINE - 18W LED T5 Batten</b> |       |           |      |           |        |
| GL90102WW                             | 18W   | 3000K     | >0.9 | 1136x37   | 1800lm |
| GL90102CD                             | 18W   | 6500K     | >0.9 | 1136x37   | 1800lm |



| ITEM CODE                         | POWER | COL. TEMP | PF   | DIMENSION | LUMENS |
|-----------------------------------|-------|-----------|------|-----------|--------|
| <b>G-POWER - 9W LED T5 Batten</b> |       |           |      |           |        |
| GL90106WW                         | 9W    | 3000K     | >0.9 | 555x37    | 950lm  |
| GL90106CD                         | 9W    | 6000K     | >0.9 | 555x37    | 950lm  |



| ITEM CODE                          | POWER | COL. TEMP | PF   | DIMENSION | LUMENS |
|------------------------------------|-------|-----------|------|-----------|--------|
| <b>G-POWER - 18W LED T5 Batten</b> |       |           |      |           |        |
| GL90107WW                          | 18W   | 3000K     | >0.9 | 1155x37   | 1890lm |
| GL90107CD                          | 18W   | 6000K     | >0.9 | 1155x37   | 1890lm |



| ITEM CODE                                  | POWER | COL. TEMP | PF   | DIMENSION | LUMENS |
|--|-------|-----------|------|-----------|--------|
| <b>STYLUS - 11W LED - Aluminium Batten</b> |       |           |      |           |        |
| GL90121WW                                  | 11W   | 2700K     | >0.9 | 555x37    | 1100lm |
| GL90121CD                                  | 11W   | 6500K     | >0.9 | 555x37    | 1100lm |

| ITEM CODE                                  | POWER | COL. TEMP | PF   | DIMENSION | LUMENS |
|--|-------|-----------|------|-----------|--------|
| <b>STYLUS - 25W LED - Aluminium Batten</b> |       |           |      |           |        |
| GL90123WW                                  | 25W   | 3000K     | >0.9 | 1157x37   | 2500lm |
| GL90123CD                                  | 25W   | 6500K     | >0.9 | 1157x37   | 2500lm |



| ITEM CODE                        | POWER | COL. TEMP | PF   | DIMENSION | LUMENS |
|----------------------------------|-------|-----------|------|-----------|--------|
| <b>VISTA - 10W LED T5 Batten</b> |       |           |      |           |        |
| GL90111WW                        | 10W   | 2700K     | >0.9 | 555x37    | 1000lm |
| GL90111CD                        | 10W   | 6500K     | >0.9 | 555x37    | 1000lm |



| ITEM CODE                        | POWER | COL. TEMP | PF   | DIMENSION | LUMENS |
|----------------------------------|-------|-----------|------|-----------|--------|
| <b>VISTA - 20W LED T5 Batten</b> |       |           |      |           |        |
| GL90112WW                        | 20W   | 2700K     | >0.9 | 1136x37   | 2000lm |
| GL90112CD                        | 20W   | 6500K     | >0.9 | 1136x37   | 2000lm |



| ITEM CODE                       | POWER | COL. TEMP | PF   | DIMENSION | LUMENS |
|---------------------------------|-------|-----------|------|-----------|--------|
| <b>AURA - 10W LED T5 Batten</b> |       |           |      |           |        |
| GL90116WW                       | 10W   | 2700K     | >0.9 | 555x37    | 1000lm |
| GL90116CD                       | 10W   | 6500K     | >0.9 | 555x37    | 1000lm |



| ITEM CODE                       | POWER | COL. TEMP | PF   | DIMENSION | LUMENS |
|---------------------------------|-------|-----------|------|-----------|--------|
| <b>AURA - 20W LED T5 Batten</b> |       |           |      |           |        |
| GL90117WW                       | 20W   | 2700K     | >0.9 | 1136x37   | 2000lm |
| GL90117CD                       | 20W   | 6500K     | >0.9 | 1136x37   | 2000lm |



| ITEM CODE                                      | POWER | COL. TEMP | PF   | DIMENSION | LUMENS |
|--|-------|-----------|------|-----------|--------|
| <b>ESPIRIT - 11W LED T5 - Aluminium Batten</b> |       |           |      |           |        |
| GL90126WW                                      | 11W   | 2700K     | >0.9 | 555x37    | 1100lm |
| GL90126CD                                      | 11W   | 6500K     | >0.9 | 555x37    | 1100lm |



| ITEM CODE                                      | POWER | COL. TEMP | PF   | DIMENSION | LUMENS |
|--|-------|-----------|------|-----------|--------|
| <b>ESPIRIT - 22W LED T5 - Aluminium Batten</b> |       |           |      |           |        |
| GL90127WW                                      | 22W   | 2700K     | >0.9 | 1136x37   | 2200lm |
| GL90127CD                                      | 22W   | 6500K     | >0.9 | 1136x37   | 2200lm |



All dimensions are in mm



# BLOOM

## LED LAMP

STYLISH. EFFICIENT. DESIGNED TO LAST.



**5W EQUAL TO 40W\***  
\*Nearest incandescent bulb equivalent

**90%** Save 90% Energy

Not Suitable For Enclosed Down Lighters

Wide Voltage Range 140v To 270v AC

**15yrs** Lasts Up to 15 Years At 4.5 Hours A Day

Not Suitable For Dimming And Electronic Switches

**Hg** Mercury Free



### BLOOM LED LAMP

If you're looking to upgrade your light bulbs, make sure your choice is Bloom LED bulbs. These cool-looking bulbs are not only wonderful to look at, they are winners in every other department. The Bloom LEDs emit equal light as your fluorescent bulbs while lasting longer and using lesser energy. What's more, they fit into the same sockets. So why go back to fluorescents or halogens the next time. Switch to environment-friendly Bloom bulbs, every time!

| ITEM CODE | POWER | COL. TEMP | PF | LUMENS | CRI | BEAM ANGLE |
|-----------|-------|-----------|----|--------|-----|------------|
|-----------|-------|-----------|----|--------|-----|------------|

#### BLOOM - 5W LED Lamp (B22/E27)

|           |    |       |      |        |     |      |
|-----------|----|-------|------|--------|-----|------|
| GL91011WW | 5W | 3000K | >0.9 | >400lm | >80 | 240° |
| GL91011NW | 5W | 4000K | >0.9 | >400lm | >80 | 240° |
| GL91011CD | 5W | 6000K | >0.9 | >400lm | >80 | 240° |

#### BLOOM - 7W LED Lamp (B22/E27)

|           |    |       |      |        |     |      |
|-----------|----|-------|------|--------|-----|------|
| GL91012WW | 7W | 3000K | >0.9 | >580lm | >80 | 240° |
| GL91012NW | 7W | 4000K | >0.9 | >580lm | >80 | 240° |
| GL91012CD | 7W | 6000K | >0.9 | >580lm | >80 | 240° |

#### BLOOM - 9W LED Lamp (B22/E27)

|           |    |       |      |        |     |      |
|-----------|----|-------|------|--------|-----|------|
| GL91013WW | 9W | 3000K | >0.9 | >740lm | >80 | 240° |
| GL91013NW | 9W | 4000K | >0.9 | >740lm | >80 | 240° |
| GL91013CD | 9W | 6000K | >0.9 | >740lm | >80 | 240° |

#### BLOOM - 12W LED Lamp (B22/E27)

|           |     |       |      |         |     |      |
|-----------|-----|-------|------|---------|-----|------|
| GL91014WW | 12W | 3000K | >0.9 | >1000lm | >80 | 240° |
| GL91014NW | 12W | 4000K | >0.9 | >1000lm | >80 | 240° |
| GL91014CD | 12W | 6000K | >0.9 | >1000lm | >80 | 240° |

#### GENIE - 0.5W LED Lamp (B22/E27)

|           |      |        |   |    |    |      |
|-----------|------|--------|---|----|----|------|
| GL91001BL | 0.5W | Blue   | - | NA | NA | 240° |
| GL91001GN | 0.5W | Green  | - | NA | NA | 240° |
| GL91001WH | 0.5W | White  | - | NA | NA | 240° |
| GL91001RD | 0.5W | Red    | - | NA | NA | 240° |
| GL91001YL | 0.5W | Yellow | - | NA | NA | 240° |
| GL91001OR | 0.5W | Orange | - | NA | NA | 240° |

All dimensions are in mm





The only limit is your imagination.



**CRIMSON | CITRON**  
LED STRIP LIGHTS

Features

- Dust resistant (IP20)
- Shock resistant
- Available in single as well as multi-coloured units
- Available in 5 metre strips

**CRIMSON & CITRON LED STRIP LIGHT**

The Crimson and Citron LED strip lights can increase the style quotient of your interiors with minimum investment of time, effort and money. Their ease of installation, along with the multiple choice of colours on offer, and flexibility of use make them an invaluable lighting asset in any setting. Safe for indoor as well as outdoor installations, these LED strip lights are best used on or under stairs, around vanity mirrors, under seating areas, desks, shelves – the only limit being your imagination!



Never-ending style.  
In multiple colours.



**CLARION**  
LED ROPE LIGHTS

**CLARION LED ROPE LIGHT**

The Clarion LED Rope Lights are similar to Crimson and Citron in terms of usage, brightness and colour options. With Clarion, you do not have to buy separate AC-to-DC converters; they are provided along with the lights. The Clarion can also be used in damp or wet areas as it is completely water-proof. Adding style and colour wherever they are used, you'll find the Clarion a smart and exciting solution for enhancing the ambience of any setting.

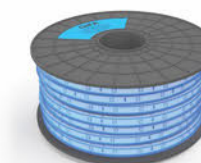
| ITEM CODE                                 | POWER | COL. TEMP | LENGTH<br>(IN M.) | LED'S<br>(PER M.) | LUMENS<br>(PER LED) | IP RATING |
|---|-------|-----------|-------------------|-------------------|---------------------|-----------|
| <b>CRIMSON 2835 - 20W LED Strip Light</b> |       |           |                   |                   |                     |           |
| GL90701CD                                 | 20W   | CDL       | 5                 | 60                | 20                  | 20        |
| GL90701WW                                 | 20W   | WW        | 5                 | 60                | 20                  | 20        |
| GL90701BL                                 | 20W   | BLUE      | 5                 | 60                | 20                  | 20        |
| GL90701RD                                 | 20W   | RED       | 5                 | 60                | 20                  | 20        |
| GL90701GN                                 | 20W   | GREEN     | 5                 | 60                | 20                  | 20        |
| GL90701PN                                 | 20W   | PINK      | 5                 | 60                | 20                  | 20        |



| ITEM CODE                                | POWER | COL. TEMP | LENGTH<br>(IN M.) | LED'S<br>(PER M.) | LUMENS<br>(PER LED) | IP RATING |
|--|-------|-----------|-------------------|-------------------|---------------------|-----------|
| <b>CITRON 5050 - 60W LED Strip Light</b> |       |           |                   |                   |                     |           |
| GL90707CD                                | 60W   | CDL       | 5                 | 60                | 22                  | 20        |
| GL90707WW                                | 60W   | WW        | 5                 | 60                | 22                  | 20        |
| GL90707BL                                | 60W   | BLUE      | 5                 | 60                | 22                  | 20        |
| GL90707RD                                | 60W   | RED       | 5                 | 60                | 22                  | 20        |
| GL90707GN                                | 60W   | GREEN     | 5                 | 60                | 22                  | 20        |
| GL90707PN                                | 60W   | PINK      | 5                 | 60                | 22                  | 20        |



| ITEM CODE                           | POWER | COL. TEMP | LENGTH<br>(IN M.) | LED'S<br>(PER M.) | LUMENS<br>(PER LED) | IP RATING |
|-------------------------------------|-------|-----------|-------------------|-------------------|---------------------|-----------|
| <b>CLARION 220V LED Rope Light*</b> |       |           |                   |                   |                     |           |
| GL90712CD                           | -     | CDL       | 50                | 60                | 22                  | 65        |
| GL90712WW                           | -     | WW        | 50                | 60                | 22                  | 65        |
| GL90712BL                           | -     | BLUE      | 50                | 60                | 22                  | 65        |
| GL90712RD                           | -     | RED       | 50                | 60                | 22                  | 65        |
| GL90712GN                           | -     | GREEN     | 50                | 60                | 22                  | 65        |
| GL90712PN                           | -     | PINK      | 50                | 60                | 22                  | 65        |



\* to be used with pre-supplied AC/DC converter

**Clarion Features**

- Dust and water resistant (IP20/IP65)
- Shock resistant
- Direct plug-in to power point
- Available in single as well as multi-coloured units
- Available in 50 metre length



Step out in the night.  
Without fear.



LED STREET  
*LIGHT*



**Optimus | Omega**

**OPTIMUS & OMEGA LED STREET LIGHT**

The Omega and Optimus LED street lights are the ideal replacements for outdated sodium vapour and halogen lights that are currently used in outdoor lighting. Whether it's street lighting, pathways or parking areas, the Omega and Optimus, with their clear, high grade lenses are capable of delivering superior visibility on the darkest of nights. In-built drivers and a housing constructed from high grade aluminium ensures that these lights perform efficiently in all types of weather.

**Features**

- Clear, high grade lens
- High surge protection
- IP65 rated, water proof
- In-built drivers
- Sleek design
- Pressure die cast aluminium



# LED STREET LIGHT

Omega



| ITEM CODE | POWER | COL. TEMP | PF | DIMENSION | CUT DIA. | CRI | BEAM ANGLE |
|-----------|-------|-----------|----|-----------|----------|-----|------------|
|-----------|-------|-----------|----|-----------|----------|-----|------------|

### OPTIMUS - Street Light

|           |      |       |      |            |    |     |      |
|-----------|------|-------|------|------------|----|-----|------|
| GL90801CD | 20W  | 6500K | >0.9 | 320x115x60 | NA | >85 | 120° |
| GL90802CD | 30W  | 6500K | >0.9 | 370x135x65 | NA | >85 | 120° |
| GL90803CD | 50W  | 6500K | >0.9 | 415x175x65 | NA | >85 | 120° |
| GL90804CD | 80W  | 6500K | >0.9 | 515x200x90 | NA | >85 | 120° |
| GL90805CD | 100W | 6500K | >0.9 | 640x230x90 | NA | >85 | 120° |

### OMEGA - Street Light

|           |      |       |      |            |    |     |      |
|-----------|------|-------|------|------------|----|-----|------|
| GL90809CD | 20W  | 6500K | >0.9 | 320x120x45 | NA | >85 | 120° |
| GL90810CD | 30W  | 6500K | >0.9 | 360x150x50 | NA | >85 | 120° |
| GL90811CD | 50W  | 6500K | >0.9 | 415x170x50 | NA | >85 | 120° |
| GL90812CD | 80W  | 6500K | >0.9 | 580x230x70 | NA | >85 | 120° |
| GL90813CD | 100W | 6500K | >0.9 | 680x270x70 | NA | >85 | 120° |



All dimensions are in mm





# LED FLOOD LIGHTS

**XPLORA**  
SLIM LED FLOOD LIGHT

| ITEM CODE                            | POWER | COL. TEMP | PF   | DIMENSION  | CUT OUT | CRI | BEAM ANGLE |
|--------------------------------------|-------|-----------|------|------------|---------|-----|------------|
| <b>XPLORA - Slim LED Flood Light</b> |       |           |      |            |         |     |            |
| GL90843CD                            | 20W   | 6000K     | >0.9 | 141x91x39  | NA      | >85 | 120°       |
| GL90844CD                            | 30W   | 6000K     | >0.9 | 191x105x39 | NA      | >85 | 120°       |
| GL90845CD                            | 50W   | 6000K     | >0.9 | 267x153x39 | NA      | >85 | 120°       |
| GL90846CD                            | 80W   | 6000K     | >0.9 | 310x180x44 | NA      | >85 | 120°       |
| GL90847CD                            | 100W  | 6000K     | >0.9 | 387x215x44 | NA      | >85 | 120°       |



**Features**

- Super Bright Light
- In-built driver
- Weather, dust, water proof
- High efficiency
- Precisely designed
- Uniform illumination

**XPLORA SLIM LED FLOOD LIGHT**

LED flood lights are a cost-efficient and environment-friendly way to illuminate outdoor areas like gardens, playgrounds, parks, stadiums, building facades, etc. Water and weather-proof, the Xplora LED Flood Lights are an ideal choice for lighting all types of large outdoor spaces. The super bright illumination, high quality finish and aesthetics makes it an equally good choice for indoor use. A high quality, durable device, the Xplora Flood Lights require low maintenance and offer significant cost benefits over a lifetime of use.

CFL >50%  
50% Energy saving over CFLs

**Zero** Maintenance

4 times more life over CFLs

**Zero** Mercury

CE

RoHS



The smart way  
to light up your world.



LEDs  
Lighting

The LED lights by Goldmedal are designed to set new benchmarks in performance and aesthetics. Engineered for quick, cost-effective installation and easy retrofitting, these LED lights and panels are packed with features and benefits. All LED lights are also available in three basic colours: warm white, natural white and cool white. Select the colour that best suits your preference. Stylish in appearance, each of these lighting devices are durable enough to last years of use.



High CRI



Power Factor



High Lumen



Mercury Free



Energy Saving



Ultra Slim



Power Saver



Compact



## SHOWROOMS

### MUMBAI

E-1, Laxmi Industrial Estate,  
New Link Road,  
Andheri West, Mumbai - 400053  
Tel: +91-22-40031075  
Email: info@goldmedalindia.com

### KOLKATA

1/1B/4, Ramkrishna Naskar lane,  
Kolkata - 700010, West Bengal  
Tel: +91-33-23740039, 8336907040  
Email: Kolkata@goldmedalindia.com

### HYDERABAD

S-1, Ground Floor, Kalphakunja  
Apartment 5-2-84/87, Jambagh,  
Hyderabad-500095, Telangana  
Tel: +91-40-24610722 / 9849172122  
Email: gmhydsunil@yahoo.co.in

### VIJAYAWADA

D. NO. 11-33-15, Tatakulavari Street,  
Vijayawada-520 001, Andhra Pradesh  
Tel: +91-866-6542000 / 8977574737  
Email: vijayawada@goldmedalindia.com

### CHANDIGARH

302/A, 3rd Floor, Elante Mall,  
Chandigarh-160002, Punjab & Haryana  
Tel: +91-9216122131  
Email: info@virgomark.com

### AHMEDABAD

401, Amrutlal Pole, Opp. Bank of Baroda,  
Khadiya-Golwad, Ahmedabad-380001, Gujarat  
Tel: +91-79-22155201  
Email: ahmedabad@goldmedalindia.com

### MUMBAI

1, Floor-GDR, Plot-157-161, Zaveri Bldg,  
Shamaldas Gandhi Marg, Loharchawl,  
Kalbadevi, Mumbai - 400002.  
Tel: +91-22-39567558  
Email: info@goldmedalindia.com

### SILIGURI

International Market, 1st Floor,  
Shop No.1, Sevoke Road, Pani Tanki More,  
Beside Sky Duin, Siliguri-734001, West Bengal.  
Tel: +91-9474588032  
Email: ritesh.g@goldmedalindia.com

### SECUNDERABAD

D. No. 7-3-693, Ground Floor, R.P. Road,  
Secunderabad - 500003, Telangana.  
Tel: +91-9490411665  
Email: info@goldmedalindia.com

### VIJAYAWADA

2nd Floor, PVP Mall, Mahatma Gandhi Rd,  
Labbipet, Vijayawada-520010, Andhra Pradesh  
Tel: +91-9885676400  
Email: vijayawada@goldmedalindia.com

### HUBBALLI

Umachagi Complex, Koppikar Road, Hubballi,  
Karnataka-580020  
Tel: +91-0836-4258466

Email: bangalore@goldmedalindia.com

### NOIDA

H-204, Sec-63  
Noida, Uttar Pradesh - 201307  
Tel: +91-120-4135901  
Email: noida@goldmedalindia.com

## BRANCHES

WEST

### MUMBAI

Shop No.20, 3rd Floor, Old Hanuman  
Lane, Dhanji Mulji Dela, Kalbadevi Road  
Marine Line, Mumbai-400002,  
Maharashtra. Tel: +91-22-39567558  
info@goldmedalindia.com

### MUMBAI

165/1315, Motilal Nagar - 1,  
Goregaon (W), Mumbai-400046,  
Maharashtra  
Tel: +91-22-28723911  
mumbai@goldmedalindia.com

### PALGHAR

Bldg. No.5, Shah Industrial Estate,  
Opp. Masjid, Mourya Naka, Sativali,  
Vasai (E), Palghar-401208, Maharashtra  
Tel: +91-22-42023026  
mumbai@goldmedalindia.com

### AHMEDABAD

401, Amrutlal Pole, Opp.  
Bank of Baroda, Golwad, Khadia,  
Ahmedabad-380001, Gujarat  
Tel: +91-79-22155201  
ahmedabad@goldmedalindia.com

### PUNE

555/556, Shop No.3, Budhwar Peth,  
Shaligram Prasad, Tapkir Galli,  
Pune, Maharashtra - 411002  
Tel: +91-9130368776  
pune@goldmedalindia.com

### BHOPAL

Sector A-85, Behind Anant Shree  
Hospital, Indrapuri, Raisen Road,  
Bhopal, Madhya Pradesh - 462021  
Tel: +91-755-2580040  
bhopal@goldmedalindia.com

EAST

### KOLKATA

1/1B/4, Ram Krishna Naskar Lane  
Beliaghata, Kolkata - 700010  
West Bengal.  
Tel: +91-8336907040  
kolkata@goldmedalindia.com

### PATNA

Ground Floor, High Plot No.4H/59,  
Bahadurpur Housing Colony,  
Lohia Nagar, Agamkuan, Patna-800020  
Bihar. Tel: +91-9386897126  
patna@goldmedalindia.com

### RANCHI

R. S. Plot No.176, M. S. Plot No.748,  
Ground Floor, Shri Ramchandra  
Apartment, Jalan Road, Upper Bazar,  
Ranchi - 834001, Jharkhand  
Customer Care : 1800 209 0234  
ranchi@goldmedalindia.com

NORTH

### NEW DELHI

4/42, Subhash Galli, Vishwas Nagar  
Shahdara, New Delhi, Delhi - 110032  
Tel: +91-11-65251133  
delhi@goldmedalindia.com

### JODHPUR

G-651/652 M.I.A, 2nd Phase,  
Near Delhi Rajasthan Transport,  
Jodhpur, Rajasthan - 342005  
Tel: +91-291-3261955  
rajasthan@goldmedalindia.com

### LUCKNOW

E - 57, 1st Floor, Transport Nagar,  
Lucknow - 226016, Uttar Pradesh  
Tel: +91-522-4233136  
lucknow@goldmedalindia.com

### NOIDA

H-204, Sec-63  
Noida, Uttar Pradesh - 201307  
Tel: +91-120-4135901  
noida@goldmedalindia.com

SOUTH

### BENGALURU

No.7, G.K. Temple street,  
Chickpet Cross, Bengaluru,  
Karnataka - 560053  
Tel: +91-80-41687799/41759977  
bangalore@goldmedalindia.com

### VIJAYAWADA

20-127/2, By Pass Road, Gollapudi,  
Krishna District, Vijayawada - 521225,  
Andhra Pradesh  
Tel: +91-866-6542333/6542888  
vijayawada@goldmedalindia.com

### HYDERABAD

Central Warehouse Corporation  
A2, P B No 34, Behind Gandhi Bhavan,  
Nampally, Hyderabad - 500001,  
Telangana  
Tel: +91-40-29706099  
hydteam@goldmedalindia.com

### CHENNAI

92/6, Nattu Pillaiar Koil Street  
Sowcarpet, Chennai,  
Tamil Nadu - 600001  
Tel: +91-44-49521008  
chennai@goldmedalindia.com



## NOTES

## NOTES



**Note:**

Reprinting and photomechanical reproduction is permitted only with our express approval. The aim of this catalogue is to inform you without any legal binding. Due to limitations of printing, images and illustrations of the products displayed may not be entirely accurate in terms of their colours, dimensions and individual components. Goldmedal reserves the right to make any changes as it deems fit to improve the functionality and performance of these products. Unless otherwise specified, the products illustrated in this catalog have been designed by Goldmedal and are covered by one or more international patents.



For more information SMS  
**GWORLD to 56161**

**Goldmedal Electricals Pvt. Ltd.**  
Bldg. No.2,  
Shripal Industrial Estate,  
Valliv Road, Vasai East,  
Palghar - 401208,  
Maharashtra,  
India.

[www.goldmedalindia.com](http://www.goldmedalindia.com)  
[info@goldmedalindia.com](mailto:info@goldmedalindia.com)

**Customer care toll free:**  
1800 209 0234



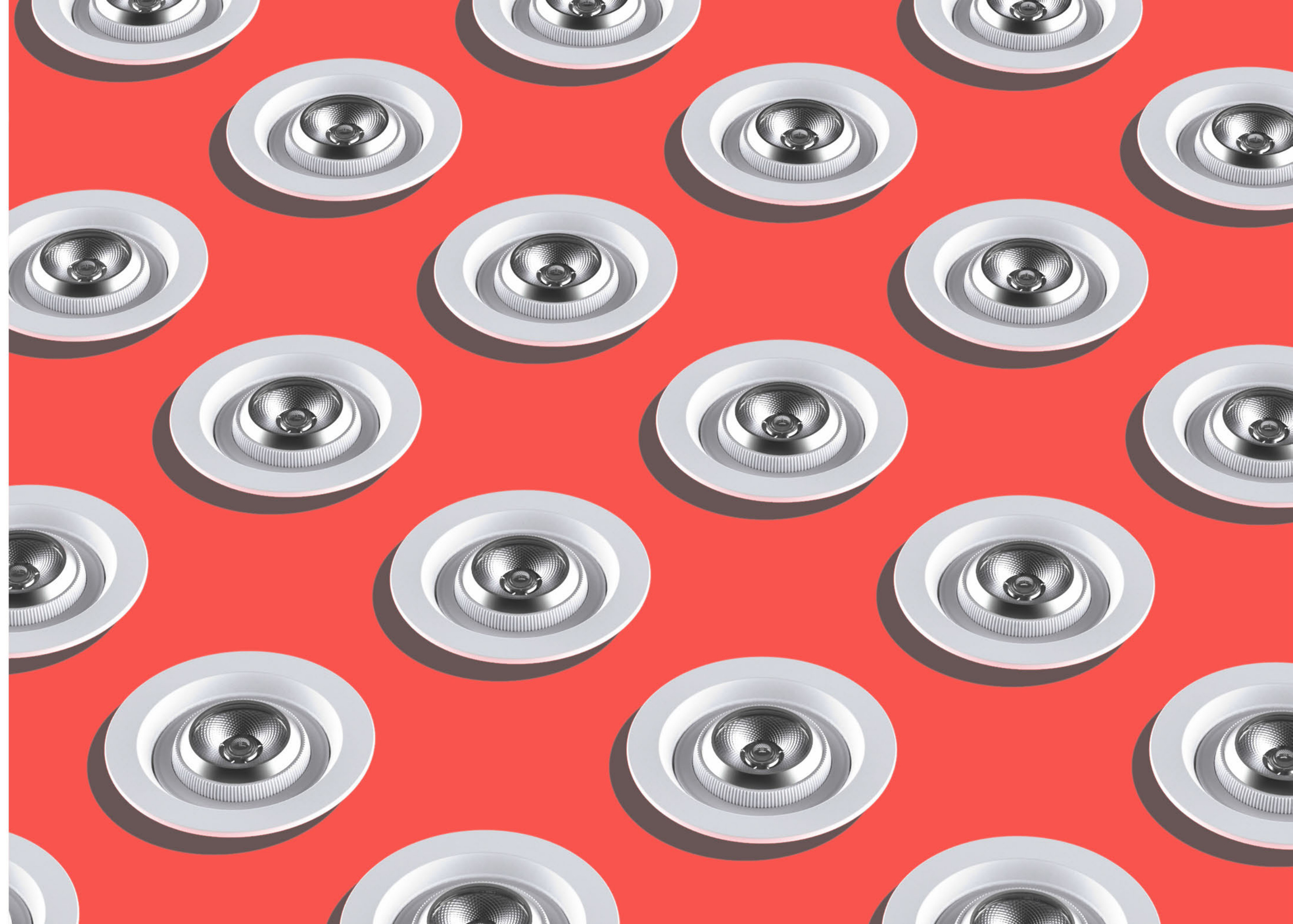
[www.facebook.com/goldmedalindia](http://www.facebook.com/goldmedalindia)



[www.twitter.com/goldmedalindia](http://www.twitter.com/goldmedalindia)



[www.youtube.com/goldmedalelectricals](http://www.youtube.com/goldmedalelectricals)





2018

EDITION-01

PRODUCTS  
AND TECHNICAL  
CATALOG

[www.goldmedalindia.com/lighting](http://www.goldmedalindia.com/lighting)



 **Goldmedal**<sup>®</sup>  
LIGHTING AND LUMINAIRES



[www.facebook.com/goldmedalindia](http://www.facebook.com/goldmedalindia)



[www.twitter.com/goldmedalindia](http://www.twitter.com/goldmedalindia)



[www.youtube.com/goldmedalelectricals](http://www.youtube.com/goldmedalelectricals)

